

CATALOGUE

SUNRISE CHESS & GAMES





Table of contents

01.	Folding wooden chess sets	10
02.	Tournament wooden chess sets	118
03.	Magnetic & travel sets	136
04.	Chess tables	148
05.	Multi-game sets / backgammon / checkers	154
06.	Wooden chess pieces	164
07.	Plastic chess pieces	196
08.	Wooden chess boards	212
09.	Examples of combination sets	222
10.	Club chess boards	238
11.	Chess clocks	244
12.	Electronic equipment	256
13.	Accessories / storage / club equipment	276
14.	Garden chess sets	296
15.	RAW chess set ready to paint	310
16.	Personalisation	314
17.	Co-operation	316



ABOUT US

Sunrise Chess & Games was founded in 1996 in Lublin, Poland as a family business. Over the years we have become one of the biggest chess companies in the world. Our products can be found in all European countries as well as in the USA, Japan and Australia.

What defines our products is their uniqueness and high quality. In the world of mass production, we remain faithful to traditional craftsmanship. Various styles of chess sets including the themed ones truly reflect the passion, energy and character of our craftsmen.

We prioritize our hand-crafted wooden games over industrial goods. What makes every single game exceptional and unique is hand-made carving, burning and inlaying. It would be hard to find two identical sets even if they came from the same batch.

Sunrise Chess & Games puts ethics before anything else. We believe that the true quality of a product is not just its final appearance but the entire process of traditional manufacturing.

That is why we source our raw materials from sustainably managed forests with respect for the environment and treat our employees and customers fairly.

See more:



*What defines
our products
is uniqueness
& high quality.*



FOLDING WOODEN CHESS SETS



Tournament 3,5" German Style Chess Set see page 125 for details



CH111 BROWN

Large King's chess set



EAN	5902560350821
Weight: kg/lbs	1.41 kg / 3.11 lbs
Size: mm/in	440×220×60 mm
Materials:	beech, birch
King's height: mm/in	75 mm / 2.95 in

CH112 BROWN

Medium King's chess set



EAN	5902560350180
Weight: kg/lbs	0.71 kg / 1.56 lbs
Size: mm/in	350×175×50 mm
Materials:	sycamore, beech, birch
King's height: mm/in	60 mm / 2.36 in



CH102

Cesar L-size chess set



EAN	5902560350210
Weight: kg/lbs	8.05 kg / 17.74 lbs
Size: mm/in	850×425×90 mm
Materials:	lime tree, beech, birch
King's height: mm/in	220 mm / 8.66 in



CH106D

Castle S-size chess set



EAN	5902560350296
Weight: kg/lbs	2.28 kg / 5.03 lbs
Size: mm/in	500×250×60 mm
Materials:	lime tree, beech, birch
King's height: mm/in	120 mm / 4.72 in





Tournament 3,5" German Style Chess Set see page 125 for details



CHW42

Tournament No5. chess set



EAN 5902560353648

Weight: kg/lbs 2.00 kg / 4.41 lbs

Size: mm/in 480×240×50 mm

Materials: beech, birch, mahogany, sycamore

King's height: mm/in 90 mm / 3.54 in





Senator Chess Set see page 47 for details

Senator Chess Set see page 47 for details



CHW1 BROWN

Ambassador chess set



EAN	5902560350203
Weight: kg/lbs	2.50 kg / 5.51 lbs
Size: mm/in	540×270×60 mm
Materials:	beech, birch
King's height: mm/in	110 mm / 4.33 in



CH135 BROWN

Consul chess set



EAN	5902560350265
Weight: kg/lbs	2.00 kg / 4.41 lbs
Size: mm/in	490×245×50 mm
Materials:	beech, birch
King's height: mm/in	80 mm / 3.15 in



CH145

Debiut chess set



EAN	5902560351088
Weight: kg/lbs	2.50 kg / 5.51 lbs
Size: mm/in	480×240×60 mm
Materials:	cherry tree, beech, birch, mahogany, sycamore
King's height: mm/in	120 mm / 4.72 in





Senator Chess Set see page 47 for details



CH128 BROWN

Ambassador chess set



EAN	5902560350647
Weight: kg/lbs	2.30 kg / 5.07 lbs
Size: mm/in	550×275×60 mm
Materials:	beech, birch
King's height: mm/in	110 mm / 4.33 in





Ambassador Chess Set see page 26 for details



CH105
Hand carved oak wooden chess set



EAN	5902560350241
Weight: kg/lbs	4.53 kg / 9.98 lbs
Size: mm/in	650×325×80 mm
Materials:	beech, birch, oak, mahogany
King's height: mm/in	150 mm / 5.91 in



CH117

Gladiator chess set



EAN	5902560350876
Weight: kg/lbs	3.13 kg / 6.90 lbs
Size: mm/in	600×300×70 mm
Materials:	lime tree, beech, birch
King's height: mm/in	150 mm / 5.91 in

CH119

Indian chess set



EAN	5902560350883
Weight: kg/lbs	2.30 kg / 5.07 lbs
Size: mm/in	540×270×60 mm
Materials:	beech, birch
King's height: mm/in	120 mm / 4.72 in

CH119F

Indian chess set



EAN	5902560350890
Weight: kg/lbs	2.35 kg / 5.18 lbs
Size: mm/in	500×250×60 mm
Materials:	beech, birch, mahogany, sycamore
King's height: mm/in	120 mm / 4.72 in

CH120

Old Polish chess set



EAN	5902560350906
Weight: kg/lbs	2.38 kg / 5.25 lbs
Size: mm/in	580×290×70 mm
Materials:	cherry tree, beech, birch
King's height: mm/in	140 mm / 5.51 in



CH115 Ace Chess Set see next page



CH115 BROWN

Ace chess set



EAN	5902560350852
Weight: kg/lbs	1.10 kg / 2.42 lbs
Size: mm/in	420×210×55 mm
Materials:	beech, birch
King's height: mm/in	100 mm / 3.94 in



CH166 Beskid Chess Set see next page for details



CH166

Beskid chess set



EAN	5902560351200
Weight: kg/lbs	1.80 kg / 3.97 lbs
Size: mm/in	490×245×60 mm
Materials:	beech, birch
King's height: mm/in	110 mm / 4.33 in





CH111 BLUE

King's large chess set



EAN	5902560352368
Weight: kg/lbs	1.41 kg / 3.11 lbs
Size: mm/in	440×220×60 mm
Materials:	beech, birch
King's height: mm/in	80 mm / 3.15 in

CH94 SET

Tournament No4. chess set



EAN	5902560350357
Weight: kg/lbs	1.40 kg / 3.09 lbs
Size: mm/in	420×210×50 mm
Materials:	beech, birch, mahogany, sycamore
King's height: mm/in	80 mm / 3.15 in

CH96 SET BROWN

Tournament No6. chess set



EAN	5902560350364
Weight: kg/lbs	2.50 kg / 5.51 lbs
Size: mm/in	530×260×60 mm
Materials:	beech, birch, mahogany, sycamore
King's height: mm/in	95 mm / 3.74 in

CH98

Tournament No8. chess set



EAN	5902560351231
Weight: kg/lbs	3.00 kg / 6.61 lbs
Size: mm/in	550×275×70 mm
Materials:	beech, birch
King's height: mm/in	115 mm / 4.53 in



Senator Chess Set see next page for details



CH125 BROWN

Senator chess set



EAN	5902560350388
Weight: kg/lbs	1.20 kg / 2.64 lbs
Size: mm/in	42×41×5 cm
Materials:	beech, birch
King's height: mm/in	78 mm / 3.07 in

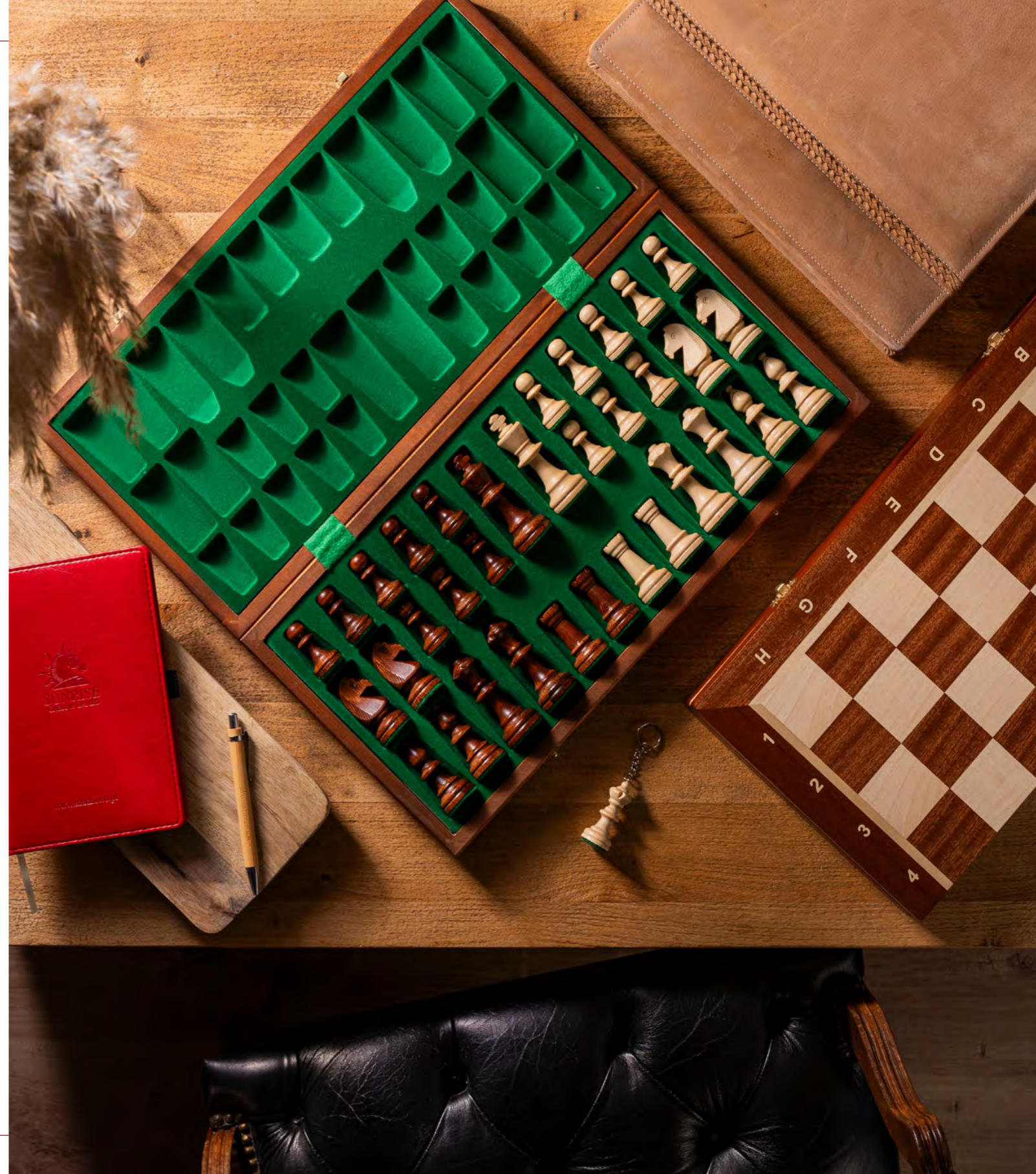


Supreme Set see page 177 for details



Empire Set see page 189 for details





CH95 SET BROWN DQ

Tournament No5. chess set
Set includes 2 Queens



EAN	5902560359855
Weight: kg/lbs	1.93 kg / 4.25 lbs
Size: mm/in	490×245×65 mm
Materials:	beech, birch, mahogany, sycamore
King's height: mm/in	90 mm / 3.54 in



King's Chess Set see page 92 for details



CH133

Large Pearl chess set



EAN	5902560351002
Weight: kg/lbs	1.30 kg / 2.87 lbs
Size: mm/in	420×210×55 mm
Materials:	beech, birch
King's height: mm/in	90 mm / 3.54 in



CH151 Royal Chess Set see page 62 for details



CH151 Royal Chess Set see page 62 for details



CH151 Royal Chess Set see page 62 for details



CH151

Royal chess set



EAN	5902560350111
Weight: kg/lbs	0.64 kg / 1.41 lbs
Size: mm/in	310×155×45 mm
Materials:	beech, birch
King's height: mm/in	65 mm / 2.56 in



CH136A

Small King's brass inlay



EAN	5902560351040
Weight: kg/lbs	2.00 kg / 4.41 lbs
Size: mm/in	490×245×50 mm
Materials:	sycamore, beech, birch
King's height: mm/in	100 mm / 3.94 in

CH139A

Spartan chess set



EAN	5902560350630
Weight: kg/lbs	1.72 kg / 3.79 lbs
Size: mm/in	500×250×60 mm
Materials:	plastic, beech, birch
King's height: mm/in	100 mm / 3.94 in

CH151A

Royal maxi chess set



EAN	5902560351095
Weight: kg/lbs	0.75 kg / 1.65 lbs
Size: mm/in	310×155×45 mm
Materials:	beech, birch
King's height: mm/in	66 mm

CHW18 ART SET SAPELE

Tournament No5. chess set



EAN	5902560354263
Weight: kg/lbs	2.15 kg / 4.74 lbs
Size: mm/in	450×225×55 mm
Materials:	sapele, maple
King's height: mm/in	90 mm / 3.54 in



CH122a Olympic Chess Set see page 87 for details



CH122a Olympic Chess Set see page 87 for details



CH122
Olympic chess set



EAN	5902560350029
Weight: kg/lbs	1.08 kg / 2.38 lbs
Size: mm/in	420×210×50 mm
Materials:	beech, birch
King's height: mm/in	80 mm / 3.15 in



CH127
Classic chess set



EAN	5902560350968
Weight: kg/lbs	1.70 kg / 3.75 lbs
Size: mm/in	500×250×60 mm
Materials:	beech, birch
King's height: mm/in	100 mm / 3.94 in



CH151 Royal Chess Set see page 62 for details



CH97

Tournament No7. chess set



EAN	5902560351224
Weight: kg/lbs	3.00 kg / 6.61 lbs
Size: mm/in	500×250×60 mm
Materials:	beech, birch, mahogany, sycamore
King's height: mm/in	100 mm / 3.94 in



CH155

Magnat chess set



EAN	5902560351118
Weight: kg/lbs	2.66 kg / 5.86 lbs
Size: mm/in	550×275×60 mm
Materials:	beech, birch
King's height: mm/in	120 mm / 4.72 in

CH93

Tournament No3. chess set



EAN	5902560350043
Weight: kg/lbs	0.88 kg / 1.94 lbs
Size: mm/in	345×175×50
Materials:	beech, birch, mahogany, sycamore
King's height: mm/in	65 mm / 2.56 in





Chess for three players

Brown chess board



CH163-Medium



CH164-Small



CH162-Large

EAN

5902560350166

5902560350159

5902560350623

Weight: kg/lbs

0.65 kg / 1.43 lbs

0.5 kg / 1.30 lbs

1.2 kg / 2.64 lbs

Size: mm/in

200×350×45 mm

160×280×40 mm

270×470×50 mm

Materials:

beech, birch

beech, birch

beech, birch

King's height: mm/in

55 mm / 2.16 in

50 mm / 1.97 in

85 mm / 3.34





CH137 GREEN

Babushka chess set



EAN	5902560351057
Weight: kg/lbs	1.12 kg / 2.47 lbs
Size: mm/in	420×210×55 mm
Materials:	beech, birch
King's height: mm/in	90 mm / 3.54 in





CH122A BROWN

Olympic chess set



EAN	5902560350920
Weight: kg/lbs	0.90 kg / 1.98 lbs
Size: mm/in	360×180×50 mm
Materials:	hornbeam, beech, birch
King's height: mm/in	55 mm / 2.64 in



CH122a Olympic Chess Set see page 87 for details



CH151 Royal Chess Set see page 62 for details



CH137 BLUE

Babushka chess set



EAN	5902560350395
Weight: kg/lbs	1.12 kg / 2.47 lbs
Size: mm/in	420×210×55 mm
Materials:	beech, birch
King's height: mm/in	90 mm / 3.54 in



CH152

Royal chess set



EAN	5902560351101
Weight: kg/lbs	0.59 kg / 1.30 lbs
Size: mm/in	270×135×45 mm
Materials:	beech, birch
King's height: mm/in	65 mm / 2.56 in

CH103

Cesar chess set



EAN	5902560350227
Weight: kg/lbs	3.41 kg / 7.52 lbs
Size: mm/in	600×300×70 mm
Materials:	lime tree, beech, birch
King's height: mm/in	140 mm / 5.51 in

CH104

Royal lux chess set



EAN	5902560350234
Weight: kg/lbs	3.56 kg / 7.85 lbs
Size: mm/in	650×325×80 mm
Materials:	sycamore, oak, beech, birch
King's height: mm/in	130 mm / 5.12 in



CH113 BROWN

King's chess set



EAN	5902560350067
Weight: kg/lbs	0.57 kg / 1.26 lbs
Size: mm/in	300×150×50 mm
Materials:	beech, birch
King's height: mm/in	60 mm / 2.36 in



Jowisz Chess Set page 107 for details



CH134

Pearl chess set



EAN	5902560351026
Weight: kg/lbs	0.60 kg / 1.32 lbs
Size: mm/in	290×145×50 mm
Materials:	beech, birch
King's height: mm/in	65 mm / 2.56 in



CH114 BROWN

Christmas chess set



EAN	5902560350838
Weight: kg/lbs	2.00 kg / 4.41 lbs
Size: mm/in	500×250×60 mm
Materials:	beech, birch
King's height: mm/in	120 mm / 4.72 in

CH114A

Christmas chess set L-size



EAN	5902560350845
Weight: kg/lbs	3.90 kg / 8.60 lbs
Size: mm/in	600×300×70 mm
Materials:	beech, birch
King's height: mm/in	170 mm / 6.69 in

CH123

Indian chess set



EAN	5902560350944
Weight: kg/lbs	1.53 kg / 3.37 lbs
Size: mm/in	480×240×60 mm
Materials:	cherry tree, beech, birch
King's height: mm/in	90 mm / 3.54 in

CH116

Orawa chess set



EAN	5902560350869
Weight: kg/lbs	2.69 kg / 5.93 lbs
Size: mm/in	500×250×60 mm
Materials:	lime tree, beech, birch, mahogany, sycamore
King's height: mm/in	110 mm / 4.33 in



CHW12 SAPELE

Tournament No3. chess set



EAN	5902560354003
Weight: kg/lbs	0.80 kg / 1.76 lbs
Size: mm/in	300×150×25 mm
Materials:	birch, maple, sapele, needle tree
King's height: mm/in	63 mm / 2.48 in



CHW3 BROWN

Consul chess set



EAN	5902560350333
Weight: kg/lbs	0.80 kg / 1.76 lbs
Size: mm/in	480×240×60 mm
Materials:	hornbeam, sycamore, beech, birch
King's height: mm/in	90 mm / 3.54 in





CH150

Club chess set



EAN	5902560350012
Weight: kg/lbs	1.34 kg / 2.95 lbs
Size: mm/in	480×240×60 mm
Materials:	beech, birch
King's height: mm/in	100 mm / 3.94 in

CH154

School chess set



EAN	5902560350173
Weight: kg/lbs	0.50 kg / 1.10 lbs
Size: mm/in	275×135×40 mm
Materials:	beech, birch
King's height: mm/in	60 mm / 2.36 in



CH122B

Olympic chess set



EAN	5902560350371
Weight: kg/lbs	0.50 kg / 1.10 lbs
Size: mm/in	280×140×45 mm
Materials:	beech, birch
King's height: mm/in	60 mm / 2.36 in

CH129

Christmas chess set



EAN	5902560350975
Weight: kg/lbs	1.31 kg / 2.89 lbs
Size: mm/in	480×240×60 mm
Materials:	beech, birch
King's height: mm/in	100 mm / 3.94 in

CH131

Roman chess set



EAN	5902560350982
Weight: kg/lbs	2.42 kg / 5.33 lbs
Size: mm/in	550×275×60 mm
Materials:	beech, birch
King's height: mm/in	140 mm / 5.51 in

CH133F

Wild cherry pearl chess set



EAN	5902560351019
Weight: kg/lbs	1.33 kg / 2.93 lbs
Size: mm/in	420×210×55 mm
Materials:	beech, birch, mahogany, wild cherry
King's height: mm/in	90 mm / 3.54 in



CHW4

Junior chess set



EAN	5902560350128
Weight: kg/lbs	1.90 kg / 4.19 lbs
Size: mm/in	420×210×50 mm
Materials:	hornbeam, sycamore, beech, birch
King's height: mm/in	85 mm / 3.35 in

CHW6

Jowisz chess set



EAN	5902560350135
Weight: kg/lbs	1.15 kg / 2.53 lbs
Size: mm/in	420×210×50 mm
Materials:	hornbeam, sycamore, beech, birch
King's height: mm/in	78 mm / 3.07 in



CH106A

Castle chess set



EAN	5902560350272
Weight: kg/lbs	3.82 kg / 8.42 lbs
Size: mm/in	600×300×70 mm
Materials:	lime tree, beech, birch, mahogany, sycamore
King's height: mm/in	120 mm / 4.72 in

CH106C

Castle chess set



EAN	5902560350289
Weight: kg/lbs	3.28 kg / 7.23 lbs
Size: mm/in	560×280×70 mm
Materials:	lime tree, beech, birch, mahogany, sycamore
King's height: mm/in	120 mm / 4.72 in



Royal Maxi CH151 see page 62 for details



CH122AF

Olympic chess set



EAN	5902560350937
Weight: kg/lbs	1.00 kg / 2.20 lbs
Size: mm/in	350×175×45 mm
Materials:	beech, birch, mahogany, sycamore
King's height: mm/in	65 mm / 2.56 in

CH107

King's chess set with brass inlay



EAN	5902560350784
Weight: kg/lbs	2.12 kg / 4.67 lbs
Size: mm/in	500×250×60 mm
Materials:	hornbeam, cherry tree, beech, birch
King's height: mm/in	120 mm / 4.72 in

CH109

Galant chess set



EAN	5902560350807
Weight: kg/lbs	2.26 kg / 4.98 lbs
Size: mm/in	580×290×70 mm
Materials:	beech, birch
King's height: mm/in	140 mm / 5.51 in

CH110

Giewont chess set



EAN	5902560350814
Weight: kg/lbs	2.00 kg / 4.41 lbs
Size: mm/in	500×250×60 mm
Materials:	lime tree, beech, birch
King's height: mm/in	120 mm / 4.72 in



CHW41 SET

Tournament No4. weighted



EAN	5904263393051
Weight: kg/lbs	1.30 kg / 2.87 lbs
Size: mm/in	420×210×50 mm
Materials:	beech, birch, mahogany, sycamore
King's height: mm/in	78 mm / 3.07 in

CHW43 SET

Tournament No6. weighted



EAN	5902560353679
Weight: kg/lbs	2.40 kg / 5.29 lbs
Size: mm/in	540×270×60 mm
Materials:	beech, birch, mahogany, sycamore
King's height: mm/in	98 mm / 3.86 in /

CHW15 ART SET SAPELE

Chess for three players large



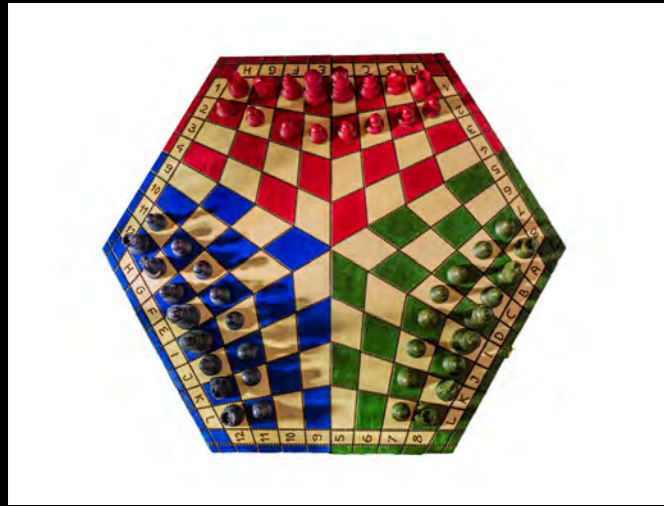
EAN	5902560354386
Weight: kg/lbs	1.30 kg / 2.87 lbs
Size: mm/in	380×190×50 mm
Materials:	mahogany, maple
King's height: mm/in	80 mm / 3.15 in

CH162A TRICOLOUR

Chess for three players large



EAN	5902560351170
Weight: kg/lbs	1.21 kg / 2.67 lbs
Size: mm/in	270×470×50 mm
Materials:	beech, birch
King's height: mm/in	85 mm / 3.35 in



CH164A TRICOLOUR

Chess for three players small



EAN 5902560351194

Weight: kg/lbs 0.44 kg / 0.97 lbs

Size: mm/in 160x280x40 mm

Materials: beech, birch

King's height: mm/in 50 mm / 1.97 in



Senator Chess Set see page 47 for details

TOURNAMENT WOODEN CHESS SETS



CH122a Olympic Chess Set see page 87 for details



CH94 101 E300

Tournament no4. German
Double queen included



EAN	5902560358247
Weight: kg/lbs	2.20 kg / 4.85 lbs
Size: mm/in	420×210×50 mm
Materials:	birch, maple, mahogany - pieces boxwood
King's height: mm/in	80 mm / 3.15 in



CH94 101 S300

Tournament no4. German
Double queen included



EAN	5902560358230
Weight: kg/lbs	2.20 kg / 4.85 lbs
Size: mm/in	420×210×50 mm
Materials:	birch, maple, mahogany - pieces boxwood/acacia
King's height: mm/in	80 mm / 3.15 in





Ch165a Chess + Checkers Set see page 159 for details



T50 DCP03H BROWN

Quality tournament silk-print chess



EAN 5902560355093

Weight: kg/lbs 2.05 kg / 4.52 lbs

Size: mm/in 480×240×50 mm

Materials: board - beech/birch, pieces - quality plastic, weighted

King's height: mm/in 96 mm / 3.78 in





CH95 101 S350

Tournament 3,5" German - acacia
Double queen included



EAN	5902560352108
Weight: kg/lbs	2.70 kg / 5.95 lbs
Size: mm/in	480×240×50 mm
Materials:	birch, maple, mahogany - pieces boxwood/acacia
King's height: mm/in	90 mm / 3.54 in



CH95 101 E350

Tournament 3,5" German - ebonised
Double queen included



EAN	5902560351903
Weight: kg/lbs	2.60 kg / 5.73 lbs
Size: mm/in	480×240×50 mm
Materials:	birch, maple, mahogany - pieces boxwood
King's height: mm/in	90 mm / 3.54 in





CH96 102 S375

Tournament 3,75" French - acacia
Double queen included



EAN	5902560358575
Weight: kg/lbs	2.80 kg / 6.17 lbs
Size: mm/in	530×260×60 mm
Materials:	birch, maple, mahogany - pieces boxwood/acacia
King's height: mm/in	96 mm / 3.78 in

T35 SET

Training set



EAN	5902560353976
Weight: kg/lbs	2.05 kg / 4.52 lbs
Size: mm/in	340×170×40 mm
Materials:	beech, birch
King's height: mm/in	55 mm / 2.64 in

T50 ART BROWN

Tournament no5 standard set



EAN	5902560355048
Weight: kg/lbs	2.00 kg / 4.41 lbs
Size: mm/in	480×240×50 mm
Materials:	beech, birch
King's height: mm/in	90 mm / 3.54 in

Olympic CH122a Chess Set see page 87 for details



CH96 101 E375

Tournament 3,75" German - ebonised
Double queen included



EAN	5902560358551
Weight: kg/lbs	2.80 kg / 6.17 lbs
Size: mm/in	530×260×60 mm
Materials:	birch, maple, mahogany - pieces boxwood
King's height: mm/in	95 mm / 3.74 in



CH96 101 S375

Tournament 3,75" German - acacia
Double queen included



EAN	5902560358599
Weight: kg/lbs	2.80 kg / 6.17 lbs
Size: mm/in	530×260×60 mm
Materials:	birch, maple, mahogany - pieces boxwood/acacia
King's height: mm/in	95 mm / 3.74 in





CH94 102 E300

Tournament 3,00" French - ebonised
Double queen included



EAN	5902560358223
Weight: kg/lbs	2.20 kg / 4.85 lbs
Size: mm/in	420×420×25 mm
Materials:	beech, birch, mahogany, sycamore
King's height: mm/in	78mm / 3.0 in

CH94 102 S300

Tournament 3,00" French - acacia
Double queen included



EAN	5902560358216
Weight: kg/lbs	2.20 kg / 4.85 lbs
Size: mm/in	420×420×25 mm
Materials:	beech, birch, mahogany, sycamore
King's height: mm/in	78mm / 3.0 in

CH96 102 E375

Tournament 3,75" French - ebonised
Double queen included



EAN	5902560358582
Weight: kg/lbs	2.80 kg / 6.17 lbs
Size: mm/in	530×260×60 mm
Materials:	mahogany, maple
King's height: mm/in	96 mm / 3.78 in

CH95 ART SET

Standard tournament 3,5"
Double queen included



EAN	5902560351682
Weight: kg/lbs	2.00 kg / 4.41 lbs
Size: mm/in	490×245×65 mm
Materials:	beech, birch, mahogany, sycamore
King's height: mm/in	90 mm / 3.54 in



CH95 102 S350

Tournament 3,50" French - acacia
Double queen included



EAN	5902560352115
Weight: kg/lbs	2.50 kg / 5.51 lbs
Size: mm/in	490×245×50 mm
Materials:	maple, mahogany, boxwood, acacia
King's height: mm/in	90 mm / 3.54 in

CH95 102 E350

Tournament 3,50" French - ebonised
Double queen included



EAN	5902560352122
Weight: kg/lbs	2.50 kg / 5.51 lbs
Size: mm/in	490×245×50 mm
Materials:	maple, mahogany, boxwood
King's height: mm/in	90 mm / 3.54 in

Zagreb CHI103 Chess Pieces see page 175 for details

MAGNETIC & TRAVEL SETS

CHI7 see next page for details





CHI7
Folding Magnetic Chess Set



CHI10
Folding Magnetic Chess Set



CHI12
Folding Magnetic Chess Set



EAN	5902560353457	EAN	5902560354140	EAN	5902560354676
Weight: kg/lbs	0.42 kg / 0.93 lbs	Weight: kg/lbs	0.80 kg / 1.76 lbs	Weight: kg/lbs	1.20 kg / 0.93 lbs
Size: mm/in	180×90×20 mm	Size: mm/in	255×130×45 mm	Size: mm/in	300×140×50 mm
Materials:	acacia, boxwood	Materials:	acacia, boxwood	Materials:	acacia, boxwood
King's height: mm/in	32 mm / 1.26 in	King's height: mm/in	45 mm / 1.77 in	King's height: mm/in	55 mm / 2.16 in



CH140B

Magnetic chess set



EAN	5902560351064
Weight: kg/lbs	1.00 kg / 2.20 lbs
Size: mm/in	350×175×46 mm
Materials:	beech, birch
King's height: mm/in	67 mm / 2.64 in



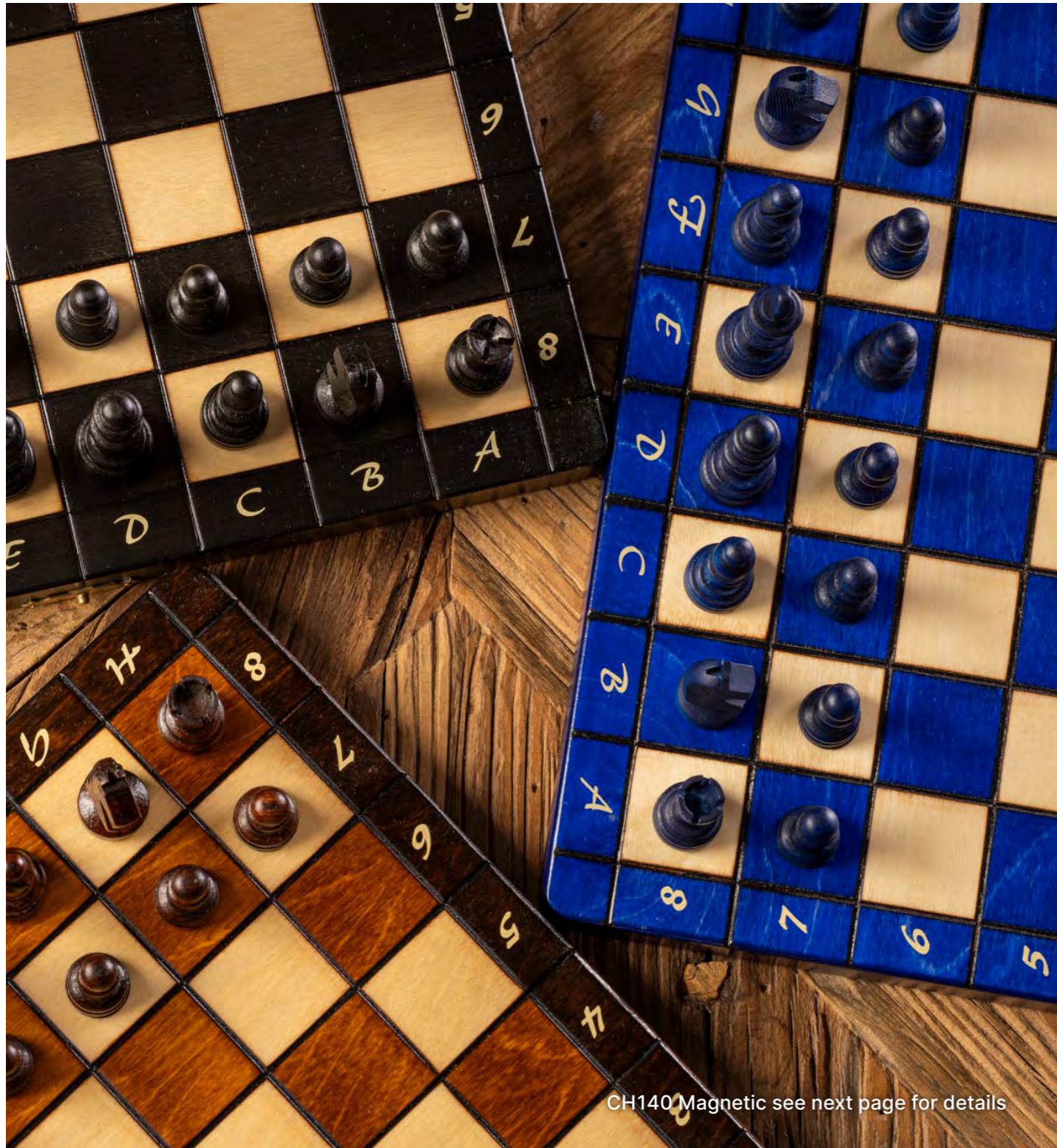
CH140S

Magnetic chess set



EAN	5902560354058
Weight: kg/lbs	0.46 kg / 1.01 lbs
Size: mm/in	275×135×40 mm
Materials:	beech, birch
King's height: mm/in	50 mm / 1.97 in





CH140 Magnetic see next page for details



CH140 Magnetic see next page for details



CH140 BROWN

Magnetic chess set
Various colours available



EAN	5902560350050
Weight: kg/lbs	0.58 kg / 1.28 lbs
Size: mm/in	280×140×40 mm
Materials:	beech, birch
King's height: mm/in	60 mm / 2.36 in



CH140F

Magnetic chess set



EAN	5902560351071
Weight: kg/lbs	0.80 kg / 1.76 lbs
Size: mm/in	350×175×50 mm
Materials:	mahogany, maple
King's height: mm/in	65 mm / 2.56 in

CH140M

Magnetic chess set



EAN	5902560354119
Weight: kg/lbs	0.33 kg / 0.73 lbs
Size: mm/in	200×100×40 mm
Materials:	beech, birch
King's height: mm/in	48 mm / 1.89 in

CH140 INTRASY

Magnetic chess set



EAN	5902560352757
Weight: kg/lbs	0.60 kg / 1.32 lbs
Size: mm/in	280×140×40 mm
Materials:	mahogany, maple
King's height: mm/in	55 mm / 2.17 in

101979 Sapele

Magnetic chess set



EAN	5902560354010
Weight: kg/lbs	0.90 kg / 1.98 lbs
Size: mm/in	310×155×50 mm
Materials:	schima superba, walnut, maple
King's height: mm/in	60 mm / 2.36 in

CHESS TABLES



Zagreb 3,5" Chess Pieces (page 175) on mahogany board 50 mm



CH101JM

Chess table (pieces not included)



EAN	5902560352139
Weight: kg/lbs	25.00 kg / 55.10 lbs
Product Size: mm/in	560×560 mm, height - 740 mm
Materials:	hornbeam, sycamore, mahogany
Field Size: mm/in	55 mm / 2.17 in



CH101C

Chess table (pieces not included)



EAN	5902560352450
Weight: kg/lbs	25.00 kg / 55.10 lbs
Product Size: mm/in	650×650 mm, 770 mm - height
Materials:	hornbeam, sycamore, mahogany
Square size: mm/in	50 mm / 1.97 in





CH101
Chess table (pieces not included)



EAN	5902560352009
Weight: kg/lbs	22.00 kg / 48.49 lbs
Size: mm/in	540×540 mm
Materials:	hornbeam, sycamore, mahogany
King's height: mm/in	130 mm / 5.12 in



Empire chess pieces see page 189 for details

MULTI- GAME SETS / BACKGAMMON / CHECKERS





CHW62A

Backgammon travel size



EAN	5902560350081
Weight: kg/lbs	0.60 kg / 1.32 lbs
Size: mm/in	280×160×50 mm
Materials:	pine, burlwood



CHW64A

Backgammon large



EAN	5902560350074
Weight: kg/lbs	1.80 kg / 3.97 lbs
Size: mm/in	480×280×55 mm
Materials:	pine, burlwood





CHW80A BURNED

Checkers 100 fields



EAN	5903263393801
Weight: kg/lbs	0.90 kg / 1.98 lbs
Size: mm/in	400×200×40 mm
Materials:	beech, birch

CHW81 INTRASY

Checkers 64 fields intarsy



EAN	5902560354966
Weight: kg/lbs	1.20 kg / 2.64 lbs
Size: mm/in	400×200×40 mm
Materials:	hornbeam, sycamore / beech, birch, mahogany, sycamore



CH141

3in1 chess/checkers/backgammon big



EAN	5902560353686
Weight: kg/lbs	0.92 kg / 2.03 lbs
Size: mm/in	400×200×48 mm
Materials:	beech, birch
King's height: mm/in	65 mm / 2.56 in

CH142

3in1 chess/checkers/backgammon



EAN	5902560353396
Weight: kg/lbs	0.36 kg / 0.79 lbs
Size: mm/in	275×135×40 mm
Materials:	beech, birch
King's height: mm/in	49 mm / 1.93 in

CH165A

Chess + checkers combo set



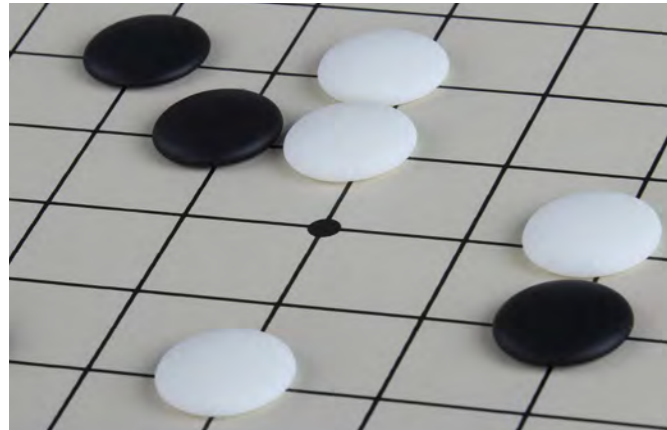
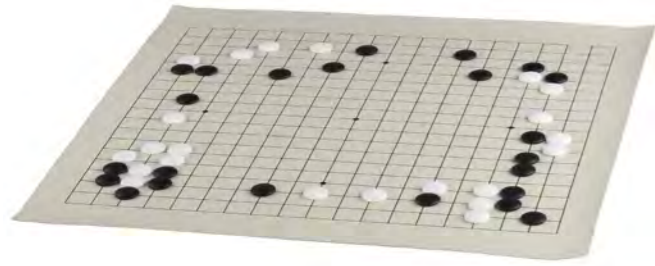
EAN	5902560350197
Weight: kg/lbs	1.00 kg / 2.20 lbs
Size: mm/in	350×175×45 mm
Materials:	beech, birch
King's height: mm/in	60 mm / 2.36 in

CH165

Chess + checkers combo set big



EAN	5902560350258
Weight: kg/lbs	1.87 kg / 4.12 lbs
Size: mm/in	500×250×60 mm
Materials:	beech, birch
King's height: mm/in	90 mm / 3.54 in



GM03

Go-game board only (no stones included)



EAN	5902560353327
Weight: kg/lbs	0.20 kg / 0.44 lbs
Size: mm/in	510x510 mm
Materials:	vinyl

GG01

Go stones



EAN	5902560353303
Weight: kg/lbs	1.00 kg / 2.20 lbs
Size: mm/in	23x5 mm
Materials:	plastic



CH165A (page 159) / CHW52A (page 155)

WOODEN CHESS PIECES





CHW25 BROWN

German Staunton No4 - 3.00"
Double queen included



EAN	5902560351965
Weight: kg/lbs	0.45 kg / 0.99 lbs
King's height: mm/in	76 mm / 3.00 in
Available woods:	hornbeam

CHW27 BROWN

German Staunton No6 - 3.75"
Double queen included



EAN	5902560350548
Weight: kg/lbs	0.60 kg / 1.32 lbs
King's height: mm/in	95 mm / 3.75 in
Available woods:	hornbeam

CHW26 BROWN

German Staunton No5 - 3.50"
Double queen included



EAN	5902560350715
Weight: kg/lbs	0.50 kg / 1.10 lbs
King's height: mm/in	90 mm / 3.50 in
Available woods:	hornbeam





CHW25 ART

German Staunton No4 - 3.00"
Double queen included



EAN	5902560354287
Weight: kg/lbs	0.35 kg / 0.77 lbs
King's height: mm/in	76mm / 3.00 in
Available woods:	schima wallichii

CHW27 ART

German Staunton No6 - 3.75"
Double queen included



EAN	5902560351880
Weight: kg/lbs	0.58 kg / 1.28 lbs
King's height: mm/in	95 mm / 3.75 in
Available woods:	schima wallichii

CHW26 ART

German Staunton No5 - 3.50"
Double queen included



EAN	5902560353464
Weight: kg/lbs	0.62 kg / 1.37 lbs
King's height: mm/in	90 mm / 3.50 in
Available woods:	schima wallichii





CHW25M

German Staunton No4 - 3.00"
Double queen included



EAN	5902560357769
Weight: kg/lbs	0.35 kg / 0.77 lbs
King's height: mm/in	76 mm / 3.00 in
Available woods:	hornbeam

CHW27

German Staunton No6 - 3.75"
Double queen included



EAN	5902560357783
Weight: kg/lbs	0.72 kg / 1.6 lbs
King's height: mm/in	95 mm / 3.75 in
Available woods:	hornbeam

CHW26

German Staunton No5 - 3.50"
Double queen included



EAN	5902560357776
Weight: kg/lbs	0.58 kg / 1.28 lbs
King's height: mm/in	90 mm / 3.50 in
Available woods:	hornbeam





Cesar L-size Chess Set page 12 for details



CHI100

American Classic Ebonised
Double queen included



	E300	E350	E375
EAN	5902560355260	5902560353518	5902560355277
Weight: kg/lbs	0.64 kg / 1.41 lbs	1.10 kg / 0.22 lbs	0.97 kg / 2.14 lbs
King's height: mm/in	76 mm / 3.00 in	90 mm / 3.50 in	95 mm / 3.75 in
Available woods:	acacia, boxwood		

CHI100

American Classic Acacia
Double queen included



	S300	S350	S375
EAN	5902560353532	5902560355239	5902560355246
Weight: kg/lbs	0.50 kg / 1.10 lbs	1.16 kg / 0.35 lbs	0.97 kg / 2.14 lbs
King's height: mm/in	76 mm / 3.00 in	90 mm / 3.50 in	95 mm / 3.75 in
Available woods:	acacia, boxwood		

CHI101

German Knight Ebonised
Double queen included



	E300	E350	E375
EAN	5902560356045	5902560353501	5902560353952
Weight: kg/lbs	0.80 kg / 1.76 lbs	1.05 kg / 2.31 lbs	1.10 kg / 2.42 lbs
King's height: mm/in	76 mm / 3.00 in	90 mm / 3.50 in	95 mm / 3.75 in
Available woods:	acacia, boxwood		

CHI101

German Knight Acacia
Double queen included



	S300	S350	S375
EAN	5902560355994	5902560356007	5902560350401
Weight: kg/lbs	0.46 kg / 1.01 lbs	1.00 kg / 2.20 lbs	1.10 kg / 2.42 lbs
King's height: mm/in	76 mm / 3.00 in	90 mm / 3.50 in	95 mm / 3.75 in
Available woods:	acacia, boxwood		



CHI102

French Ebonised
Double queen included



	E300	E350	E375
EAN	5902560355901	5902560353617	5902560350425
Weight: kg/lbs	0.75 kg / 1.65 lbs	1.00 kg / 2.20 lbs	1.10 kg / 0.22 lbs
King's height: mm/in	76 mm / 3.00 in	90 mm / 3.50 in	95 mm / 3.75 in
Available woods:	acacia, boxwood		

CHI102

French Acacia
Double queen included



	S300	S350	S375
EAN	5902560355871	5902560355888	5902560350418
Weight: kg/lbs	0.50 kg / 1.10 lbs	1.00 kg / 2.20 lbs	1.10 kg / 0.22 lbs
King's height: mm/in	76 mm / 3.00 in	90 mm / 3.50 in	95 mm / 3.75 in
Available woods:	acacia, boxwood		

CHI103 E350

Zagreb Ebonised
Double queen included



	E350
EAN	5902560358711
Weight: kg/lbs	1.80 kg / 3.97 lbs
King's height: mm/in	90 mm / 3.50 in
Available woods:	acacia, boxwood

CHI137 E400

The Queen's Gambit replica
Double queen included



	E400
EAN	5902560350722
Weight: kg/lbs	2.50 kg / 5.51 lbs
King's height: mm/in	102 mm / 4.00 in
Available woods:	boxwood



CHI104 S350

Reykjavik Acacia
Double queen included



EAN	5902560356083
Weight: kg/lbs	1.10 kg / 2.42 lbs
King's height: mm/in	90 mm / 3.50 in
Available woods:	acacia, boxwood

CHI105 E350

Stallion Ebonised
Double queen included



EAN	5902560357639
Weight: kg/lbs	1.30 kg / 2.87 lbs
King's height: mm/in	90 mm / 3.50 in
Available woods:	acacia, boxwood

CHI106 S350

Supreme Acacia
Double queen included



EAN	5902560358018
Weight: kg/lbs	1.10 kg / 2.42 lbs
King's height: mm/in	90 mm / 3.50 in
Available woods:	acacia, boxwood

CHI107 E350

King's Bridal Ebonised
Double queen included



EAN	5902560356182
Weight: kg/lbs	1.60 kg / 3.53 lbs
King's height: mm/in	90 mm / 3.50 in
Available woods:	acacia, boxwood



CHI108 S350

Colombian Acacia
Double queen included



EAN	5902560355307
Weight: kg/lbs	1.27 kg / 2.80 lbs
King's height: mm/in	90 mm / 3.50 in
Available woods:	acacia, boxwood

CHI109 E350

Oxford Ebonised
Double queen included



EAN	5902560357189
Weight: kg/lbs	1.30 kg / 2.87 lbs
King's height: mm/in	90 mm / 3.50 in
Available woods:	acacia, boxwood

CHI110 E375

Sultan Ebonised
Double queen included



EAN	5902560354485
Weight: kg/lbs	1.60 kg / 3.53 lbs
King's height: mm/in	95 mm / 3.75 in
Available woods:	acacia, boxwood

CHI111 E350

Executive Ebonised
Double queen included



EAN	5902560355826
Weight: kg/lbs	1.30 kg / 2.87 lbs
King's height: mm/in	90 mm / 3.50 in
Available woods:	acacia, boxwood



CHI112 S375

Blackmore Acacia
Double queen included



EAN	5902560354867
Weight: kg/lbs	1.30 kg / 2.87 lbs
King's height: mm/in	95 mm / 3.75 in
Available woods:	acacia, boxwood

CHI113 RED425

Corinthian Redwood
Double queen included



EAN	5902560359602
Weight: kg/lbs	2.20 kg / 4.85 lbs
King's height: mm/in	108 mm / 4.25 in
Available woods:	redwood, boxwood

CHI114 E425

Pershing Ebony
Double queen included



EAN	5902560353938
Weight: kg/lbs	2.60 kg / 5.73 lbs
King's height: mm/in	108 mm / 4.25 in
Available woods:	redwood, boxwood, ebony

CHI115 E425

Unicorn Ebony
Double queen included



EAN	5902560353921
Weight: kg/lbs	2.20 kg / 4.85 lbs
King's height: mm/in	108 mm / 4.25 in
Available woods:	redwood, boxwood, ebony



CHI116 RED400

Sunrise Exclusive Redwood
Double queen included



EAN	5902560352269
Weight: kg/lbs	2.50 kg / 5.51 lbs
King's height: mm/in	102 mm / 4.00 in
Available woods:	redwood, ebony, boxwood

CHI118 RED600

Napoleon Redwood
Double queen included



EAN	5902560352306
Weight: kg/lbs	2.50 kg / 5.51 lbs
King's height: mm/in	150 mm / 6.00 in
Available woods:	redwood, boxwood, ebony

CHI119 H400

Royal Knight Ebony
Double queen included



EAN	5902560352313
Weight: kg/lbs	2.50 kg / 5.51 lbs
King's height: mm/in	102 mm / 4.00 in
Available woods:	redwood, ebony, boxwood

CHI120 H400

Derby Knight Ebony
Double queen included



EAN	5902560353914
Weight: kg/lbs	2.50 kg / 5.51 lbs
King's height: mm/in	102 mm / 4.00 in
Available woods:	acacia, ebony, redwood, boxwood



Zagreb Chess Pieces see page 175 for details



CHI121 H400

Chamfered Base Ebony
Double queen included



EAN	5902560351989
Weight: kg/lbs	2.50 kg / 5.51 lbs
King's height: mm/in	102 mm / 4.00 in
Available woods:	redwood, ebony, boxwood

CHI122 RED425

Elvis Knight Redwood
Double queen included



EAN	5902560353884
Weight: kg/lbs	2.50 kg / 5.51 lbs
King's height: mm/in	108 mm / 4.25 in
Available woods:	redwood, ebony, boxwood

CHI123 H400

Made in America Ebony
Double queen included



EAN	5902560353877
Weight: kg/lbs	2.50 kg / 5.51 lbs
King's height: mm/in	102 mm / 4.00 in
Available woods:	redwood, ebony, boxwood

CHI124 H400

Parthenon Ebony
Double queen included



EAN	5902560353846
Weight: kg/lbs	2.50 kg / 5.51 lbs
King's height: mm/in	108 mm / 4.25 in
Available woods:	ebony, boxwood



CHI125 RED 400

Alexander Redwood
Double queen included



EAN	5902560353822
Weight: kg/lbs	2.50 kg / 5.51 lbs
King's height: mm/in	102 mm / 4.00 in
Available woods:	redwood, ebony, boxwood

CHI126 RED400

Baggio Redwood
Double queen included



EAN	5902560354850
Weight: kg/lbs	2.50 kg / 5.51 lbs
King's height: mm/in	102 mm / 4.00 in
Available woods:	redwood, ebony

CHI127 RED425

Empire Redwood
Double queen included



EAN	5902560355789
Weight: kg/lbs	2.50 kg / 5.51 lbs
King's height: mm/in	108 mm / 4.25 in
Available woods:	redwood, boxwood, ebony

CHI128 H375

Polish Head Ebony
Double queen included



EAN	5902560357233
Weight: kg/lbs	1.60 kg / 3.55 lbs
King's height: mm/in	95 mm / 3.75 in
Available woods:	redwood, boxwood, ebony



CHI129 S375

Sheikh Acacia
Double queen included



EAN	5902560357387
Weight: kg/lbs	1.30 kg / 2.87 lbs
King's height: mm/in	95 mm / 3.75 in
Available woods:	acacia, boxwood, rosewood

CHI130 E375

Northern Upright Ebonised
Double queen included



EAN	5902560357141
Weight: kg/lbs	1.60 kg / 3.53 lbs
King's height: mm/in	95 mm / 3.75 in
Available woods:	boxwood

CHI131 RED500

Dubliner Montgoy Redwood
Double queen included



EAN	5902560352221
Weight: kg/lbs	2.50 kg / 5.51 lbs
King's height: mm/in	127 mm / 5.00 in
Available woods:	redwood, boxwood, ebony

CHI133 E375

Modern Staunton Ebonised
Double queen included



EAN	5902560353808
Weight: kg/lbs	1.60 kg / 3.53 lbs
King's height: mm/in	95 mm / 3.75 in
Available woods:	boxwood



CHI134 E375

Dubrovnik Ebonised
Double queen included



EAN	5902560355758
Weight: kg/lbs	1.60 kg / 3.53 lbs
King's height: mm/in	95 mm / 3.75 in
Available woods:	acacia, boxwood

CHI135 RED400

Adios Redwood
Double queen included



EAN	5902560354355
Weight: kg/lbs	2.10 kg / 4.63 lbs
King's height: mm/in	102 mm / 4.00 in
Available woods:	ebony, redwood, boxwood



Empire Chess Pieces see page 189 for details

PLASTIC CHESS PIECES





TR03

Colored Plastic Pieces



	YELLOW	GREEN
EAN	5902560359541	5902560359480
Weight: kg/lbs	0.30 kg / 0.66 lbs	0.30 kg / 0.66 lbs
King's height: mm/in	95 mm / 3.75 in	95 mm / 3.75 in
Materials:	plastic	plastic

	RED	SNOW WHITE
EAN	5902560359510	5902560359565
Weight: kg/lbs	0.30 kg / 0.66 lbs	0.30 kg / 0.66 lbs
King's height: mm/in	95 mm / 3.75 in	95 mm / 3.75 in
Materials:	plastic	plastic

CHTX26 AMBER

Transparent plastic chess pieces



	BLUE	BLACK
EAN	5902560359411	5902560351941
Weight: kg/lbs	0.30 kg / 0.66 lbs	0.30 kg / 0.66 lbs
King's height: mm/in	95 mm / 3.75 in	95 mm / 3.75 in
Materials:	plastic	plastic

EAN	5902560350654
Weight: kg/lbs	0.50 kg / 1.10 lbs
King's height: mm/in	95 mm / 3.75 in
Materials:	plastic



CHTX28

Medieval chess pieces golden/black



EAN	5902560354553
Weight: kg/lbs	0.50 kg / 1.10 lbs
King's height: mm/in	95 mm / 3.75 in
Materials:	plastic

CHTX29

Roman chess pieces cream/black



EAN	5902560353570
Weight: kg/lbs	0.40 kg / 0.88 lbs
King's height: mm/in	95 mm / 3.75 in
Materials:	plastic

CHTX30

Roman chess pieces golden/black



EAN	5902560350661
Weight: kg/lbs	0.50 kg / 1.10 lbs
King's height: mm/in	95 mm / 3.75 in
Materials:	plastic

CHTX27

Medieval chess pieces cream-black



EAN	5902560353709
Weight: kg/lbs	0.50 kg / 1.10 lbs
King's height: mm/in	95 mm / 3.75 in
Materials:	plastic



DCP01

Chess pieces for analysis



EAN	5902560352887
Weight: kg/lbs	0.14 kg / 0.31 lbs
King's height: mm/in	64 mm / 2.50 in
Materials:	plastic

DCP02

Chess pieces for analysis



EAN	5902560352894
Weight: kg/lbs	0.21 kg / 0.46 lbs
King's height: mm/in	76 mm / 3.00 in
Materials:	plastic

DCP03G

Standard chess pieces - best seller
Weighted version available - DCP03H



EAN	5902560350456
Weight: kg/lbs	0.43kg / 0.97 lbs
King's height: mm/in	95 mm / 3.75 in
Materials:	plastic

TR03G

Standard quality chess pieces - best seller



EAN	5902560359442
Weight: kg/lbs	0.60 kg / 1.33 lbs
King's height: mm/in	95 mm / 3.75 in
Materials:	plastic



DCP04H

Collector chess pieces



EAN	5902560352900
Weight: kg/lbs	1.64 kg / 3.61 lbs
King's height: mm/in	102 mm / 4.00 in
Materials:	plastic

DCP06

Club chess pieces



EAN	5902560352917
Weight: kg/lbs	0.70 kg / 1.54 lbs
King's height: mm/in	95 mm / 3.75 in
Materials:	plastic

DCP07H

Conqueror chess pieces



EAN	5902560352924
Weight: kg/lbs	1.10 kg / 2.42 lbs
King's height: mm/in	95 mm / 3.75 in
Materials:	plastic

DCP08H BLUE

Quality weighted chess pieces



EAN	5902560354560
Weight: kg/lbs	0.63 kg / 1.39 lbs
King's height: mm/in	95 mm / 3.75 in
Materials:	plastic



TR03 pieces on DMV03 blue board



DCP08H RED

Quality plastic chess pieces



EAN	5902560354577
Weight: kg/lbs	0.63 kg / 1.39 lbs
King's height: mm/in	95 mm / 3.75 in
Materials:	plastic

DCP08H NATURAL

Quality weighted chess pieces



EAN	5902560352948
Weight: kg/lbs	1.25 kg / 2.76 lbs
King's height: mm/in	95 mm / 3.75 in
Materials:	plastic



CHCA29A

DGT plastic chess pieces in box



EAN	8717662821455
Weight: kg/lbs	0.55 kg / 1.21 lbs
King's height: mm/in	86 mm / 3.38 in
Materials:	plastic

CHCA28A

DGT plastic chess pieces in bag



EAN	8717662821462
Weight: kg/lbs	0.81 kg / 1.79 lbs
King's height: mm/in	95 mm / 3.75 in
Materials:	plastic

CHCA28

DGT Plastic chess pieces in box



EAN	8717662821424
Weight: kg/lbs	1.00 kg / 2.20 lbs
King's height: mm/in	95 mm / 3.75 in
Materials:	plastic

CHCA23 + CHCA24

Judit Polgar deluxe chess set



EAN	8717662821400 / 8717662821417
Weight: kg/lbs	6.3 kg / 14.0 lbs
King's height: mm/in	95 mm / 3.75 in
Materials:	wood



CHCA44

DGT Club Pack (10 sets: pieces + boards)



EAN	8717662821547
Weight: kg/lbs	12.25 kg / 27.00 lbs
King's height: mm/in	95 mm / 3.75 in (Pieces) / 55 mm (Board squares)
Materials:	plastic

CHCA11 GREY SET

DGT set carboard chessboard + plastic chess pieces in elegant gilbsbox



EAN	8717662821349
Weight: kg/lbs	2.00 kg / 4.41 lbs
King's height: mm/in	95 mm / 3.75 in (Pieces) / 50 mm (Board squares)
Materials:	plastic, cardboard



TR03 GREEN on DMV03 BLUE

WOODEN CHESS BOARDS





MAHOGANY / SAPELE

Version with and without side notation available



WALNUT BLACK STRIPE

Version with and without side notation available



Size code:	3+	4	4+	5	5+	6
Size:	36×36cm / 14 in	40×40cm / 15.75 in	44×44cm / 17.25 in	48×48cm / 18.5 in	52×52cm / 20.15 in	54×54cm / 21.15 in
Square size:	38 mm / 1.50 in	40 mm / 1.57 in	45 mm / 1.77 in	50 mm / 1.96 in	55 mm / 2.16 in	58 mm / 2.28 in
Weight: kg/lbs	1.30 kg / 2.87 lbs	1.55 kg / 3.4 lbs	2.15 kg / 4.74 lbs	2.25 kg / 4.96 lbs	2.7 kg / 5.95 lbs	3.6 kg / 7.93 lbs

Size code:	3+	4	4+	5	5+	
Size:	36×36cm / 14 in	40×40cm / 15.75 in	44×44cm / 17.25 in	48×48cm / 18.5 in	52×52cm / 20.15 in	54×54cm / 21.15 in
Square size:	38 mm / 1.50 in	40 mm / 1.57 in	45 mm / 1.77 in	50 mm / 1.96 in	55 mm / 2.16 in	58 mm / 2.28 in
Weight: kg/lbs	1.30 kg / 2.87 lbs	1.55 kg / 3.4 lbs	2.15 kg / 4.74 lbs	2.25 kg / 4.96 lbs	2.7 kg / 5.95 lbs	3.6 kg / 7.93 lbs



BLACK

Version with and without side notation available



Size code:	3+	4	4+	5	5+	6
Size:	36×36cm / 14 in	40×40cm / 15.75 in	44×44cm / 17.25 in	48×48cm / 18.5 in	52×52cm / 20.15 in	54×54cm / 21.15 in
Square size:	38 mm / 1.50 in	40 mm / 1.57 in	45 mm / 1.77 in	50 mm / 1.96 in	55 mm / 2.16 in	58 mm / 2.28 in
Weight: kg/lbs	1.30 kg / 2.87 lbs	1.55 kg / 3.4 lbs	2.15 kg / 4.74 lbs	2.25 kg / 4.96 lbs	2.7 kg / 5.95 lbs	3.6 kg / 7.93 lbs

PADAUK

Version with and without side notation available



Size code:	3+	4	4+	5	5+	6
Size:	36×36cm / 14 in	40×40cm / 15.75 in	44×44cm / 17.25 in	48×48cm / 18.5 in	52×52cm / 20.15 in	54×54cm / 21.15 in
Square size:	38 mm / 1.50 in	40 mm / 1.57 in	45 mm / 1.77 in	50 mm / 1.96 in	55 mm / 2.16 in	58 mm / 2.28 in
Weight: kg/lbs	1.30 kg / 2.87 lbs	1.55 kg / 3.4 lbs	2.15 kg / 4.74 lbs	2.25 kg / 4.96 lbs	2.7 kg / 5.95 lbs	3.6 kg / 7.93 lbs



WENGE

Version with and without side notation available



Size code:	3+	4	4+	5	5+	6
Size:	36×36cm / 14 in	40×40cm / 15.75 in	44×44cm / 17.25 in	48×48cm / 18.5 in	52×52cm / 20.15 in	54×54cm / 21.15 in
Square size:	38 mm / 1.50 in	40 mm / 1.57 in	45 mm / 1.77 in	50 mm / 1.96 in	55 mm / 2.16 in	58 mm / 2.28 in
Weight: kg/lbs	1.30 kg / 2.87 lbs	1.55 kg / 3.4 lbs	2.15 kg / 4.74 lbs	2.25 kg / 4.96 lbs	2.7 kg / 5.95 lbs	3.6 kg / 7.93 lbs

WALNUT

Version with and without side notation available



Size code:	3+	4	4+	5	5+	6
Size:	36×36cm / 14 in	40×40cm / 15.75 in	44×44cm / 17.25 in	48×48cm / 18.5 in	52×52cm / 20.15 in	54×54cm / 21.15 in
Square size:	38 mm / 1.50 in	40 mm / 1.57 in	45 mm / 1.77 in	50 mm / 1.96 in	55 mm / 2.16 in	58 mm / 2.28 in
Weight: kg/lbs	1.30 kg / 2.87 lbs	1.55 kg / 3.4 lbs	2.15 kg / 4.74 lbs	2.25 kg / 4.96 lbs	2.7 kg / 5.95 lbs	3.6 kg / 7.93 lbs



LUXURY

More photos of these boards are in the next section of this catalogue



Size code:	5+	6
Size:	52×52cm / 20.15 in	54×54cm / 21.15 in
Square size:	55 mm / 2.16 in	60 mm / 2.36 in
Weight: kg/lbs	2.7 kg / 5.95 lbs	3.6 kg / 7.93 lbs

FOLDABLE

Version with and without side notation available



Size code:	5	6
Size:	52×52cm / 20.15 in	54×54cm / 21.15 in
Square size:	50 mm / 1.96 in	58 mm / 2.28 in
Weight: kg/lbs	2.25 kg / 4.96 lbs	3.6 kg / 7.93 lbs

EXAMPLES OF COMBINATION SETS



American Classic CHI100 S350 Chess Pieces see page 172 for details on walnut chessboard with the black stripe D50 WAL BS w/o notation



D55 WAL BS WO

Wooden chessboard with black stripe



EAN	5902560351774
Weight: kg/lbs	3.5 kg / 7.71 lbs
Board Size / Square Size:	520×520 mm / 55 mm
Available woods:	walnut, maple

CHI108 S375

Colombian Acacia



EAN	5902560355314
Weight: kg/lbs	1.4 kg / 3.09 lbs
King's height: mm/in	98 mm / 3.85 in
Available woods:	acacia, boxwood

D58 PAD RND WO

Wooden chessboard with round corners



EAN	5902560351286
Weight: kg/lbs	3.4 kg / 7.49 lbs
Board Size / Square Size: mm/in	540×540 mm / 58 mm
Available woods:	padauk, maple

CHI111 S375

Executive Acacia



EAN	5902560355802
Weight: kg/lbs	1.5 kg / 3.31 lbs
King's height: mm/in	97 mm / 3.81 in
Available woods:	acacia, boxwood



CHI58 RED ROUND

Solid wood deluxe chessboard, round corners



EAN	5902560355147
Weight: kg/lbs	5.5 kg / 12.12 lbs
Board Size / Square Size:	580×580 mm / 58 mm
Available woods:	redwood, boxwood, ebony

CHI115 RED425

Unicorn Redwood



EAN	5902560358650
Weight: kg/lbs	2.2 kg / 4.85 lbs
King's height: mm/in	110 mm / 4.33 in
Available woods:	redwood, boxwood, ebony

CHI58 RED ROUND

Solid wood deluxe chessboard, round corners



EAN	5902560355147
Weight: kg/lbs	5.5 kg / 12.12 lbs
Board Size / Square Size:	580×580 mm / 58 mm
Available woods:	redwood, boxwood, ebony

CHI129 S375

Sheikh Acacia



EAN	5902560357387
Weight: kg/lbs	1.3 kg / 2.87 lbs
King's height: mm/in	95 mm / 3.74 in
Available woods:	acacia, boxwood, rosewood



D50 BLACK NOTATION

Wooden chessboard



EAN	5902560351583
Weight: kg/lbs	2.2 kg / 4.85 lbs
Board Size / Square Size:	480x480 mm / 50 mm
Available woods:	maple

CHI106 S350

Supreme Acacia



EAN	5902560358018
Weight: kg/lbs	1.1 kg / 2.42 lbs
King's height: mm/in	90 mm / 3.54 in
Available woods:	acacia, boxwood

D58 PAD RND WO

Wooden chessboard with round corners



EAN	5902560351286
Weight: kg/lbs	3.4 kg / 7.49 lbs
Board Size / Square Size:	540x540 mm / 58 mm
Available woods:	padauk, maple

CHI105 E375

Stallion Ebonised



EAN	5902560357646
Weight: kg/lbs	1.4 kg / 3.09 lbs
King's height: mm/in	98 mm / 3.85 in
Available woods:	acacia, boxwood



D50 BLACK NOTATION

Wooden chessboard



EAN	5902560351583
Weight: kg/lbs	2.2 kg / 4.85 lbs
Board Size / Square Size:	480×480 mm / 50 mm
Available woods:	maple

CHI102 E350

French Ebonised



EAN	5902560353617
Weight: kg/lbs	1 kg / 2.20 lbs
King's height: mm/in	90 mm / 3.54 in
Available woods:	acacia, boxwood

D50 BLACK NOTATION

Wooden chessboard



EAN	5902560351583
Weight: kg/lbs	2.2 kg / 4.85 lbs
Board Size / Square Size:	480×480 mm / 50 mm
Available woods:	maple

CHI103 S350

Zagreb Acacia



EAN	5902560358698
Weight: kg/lbs	1 kg / 2.20 lbs
King's height: mm/in	90 mm / 3.54 in
Available woods:	acacia, boxwood



D50 MAH NOTATION

Wooden chessboard



EAN	5902560351422
Weight: kg/lbs	2.2 kg / 4.85 lbs
Board Size / Square Size:	480×480 mm / 50 mm
Available woods:	sapele, maple

CHI101 S350

German Knight Acacia



EAN	5902560356007
Weight: kg/lbs	1 kg / 2.20 lbs
King's height: mm/in	90 mm / 3.54 in
Available woods:	acacia, boxwood

D50 MAH NOTATION

Wooden chessboard



EAN	5902560351422
Weight: kg/lbs	2.2 kg / 4.85 lbs
Board Size / Square Size:	480×480 mm / 50 mm
Available woods:	sapele, maple

CHI103 S350

Zagreb Acacia



EAN	5902560358698
Weight: kg/lbs	1 kg / 2.20 lbs
King's height: mm/in	90 mm / 3.54 in
Available woods:	acacia, boxwood



D55 WAL BS WO

Wooden chessboard with black stripe



EAN	5902560351774
Weight: kg/lbs	3.5 kg / 7.71 lbs
Board Size / Square Size:	520×520 mm / 55 mm
Available woods:	walnut, maple

CHI100 S375

Classic Acacia



EAN	5902560355246
Weight: kg/lbs	1 kg / 2.20 lbs
King's height: mm/in	96 mm / 3.77 in
Available woods:	acacia, boxwood

D58 BLACK WO

Wooden chessboard



EAN	5902560351613
Weight: kg/lbs	3.75 kg / 8.27 lbs
Board Size / Square Size:	540×540 mm / 58 mm
Available woods:	maple

CHI101 E375

German Knight Ebonised



EAN	5902560353952
Weight: kg/lbs	1.1 kg / 2.42 lbs
King's height: mm/in	97 mm / 3.81 in
Available woods:	acacia, boxwood



D50 WAL NOTATION

Wooden chessboard



EAN	5902560351507
Weight: kg/lbs	2.2 kg / 4.85 lbs
Board Size / Square Size:	480×480 mm / 50 mm
Available woods:	walnut, maple

CHI104 S350

Reykjavik Acacia



EAN	5902560356083
Weight: kg/lbs	1.1 kg / 2.42 lbs
King's height: mm/in	90 mm / 3.54 in
Available woods:	acacia, boxwood

D58 PAD RND WO

Wooden chessboard with round corners



EAN	5902560351286
Weight: kg/lbs	3.4 kg / 7.49 lbs
Board Size / Square Size:	540×540 mm / 58 mm
Available woods:	padauk, maple

CHI129 S375

Sheikh Acacia

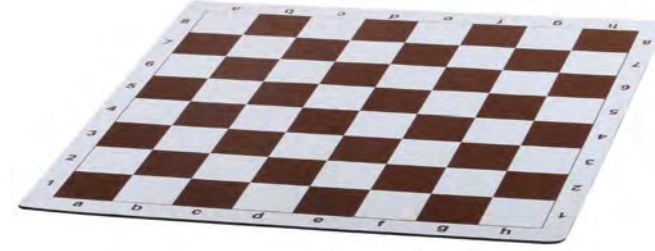
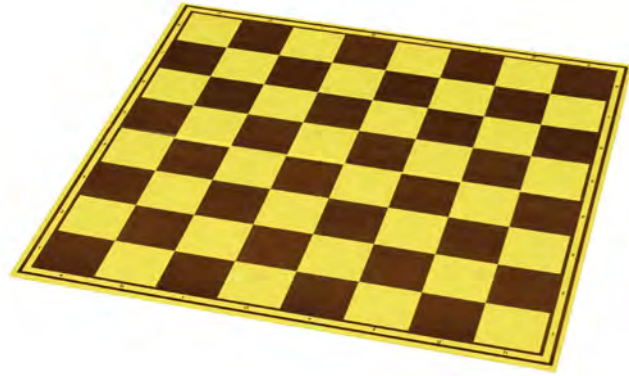


EAN	5902560357387
Weight: kg/lbs	1.3 kg / 2.87 lbs
King's height: mm/in	95 mm / 3.74 in
Available woods:	acacia, boxwood, rosewood

CLUB CHESS BOARDS



TR03G chess pieces on DMV03A (brown) + DMV03A (blue)



CHTX55PROF

Standard club chessboard



EAN	5902560354416
Weight: kg/lbs	0.40 kg / 0.88 lbs
Board Size / Square Size:	470×470 mm / 55 mm
Materials:	cast coated rigid paper glossy or mat finish

DMF03 BROWN

Folding chessboard – various colors available



EAN	5902560353020
Weight: kg/lbs	0.40 kg / 0.88 lbs
Board Size / Square Size:	520×520 mm / 58 mm
Materials:	rigid, easy to clean plastic

DMR03

Rubber mouse pad chessboard



EAN	5902560357325
Weight: kg/lbs	0.60 kg / 1.32 lbs
Board Size / Square Size:	510×510 mm / 57 mm
Materials:	rubber mouse pad

DMS03 BLACK

Silicone chessboard – various colors available



EAN	5902560357424
Weight: kg/lbs	0.50 kg / 1.10 lbs
Board Size / Square Size:	510×510 mm / 57 mm
Materials:	silicone



DMU03 BLUE

Folding chessboard – various colors available



DMV03A

Vinyl chessboard – various colors available



DMV07A

XL vinyl chessboard – various colors available



DMR06

Rubber mouse pad chessboard – various colors available



EAN	5902560353112
Weight: kg/lbs	0.40 kg / 0.88 lbs
Board Size / Square Size:	510×510 mm / 57 mm
Materials:	rigid, easy to clean plastic

EAN	5902560353211
Weight: kg/lbs	0.40 kg / 0.88 lbs
Board Size / Square Size:	510×510 mm / 57 mm
Materials:	vinyl

EAN	5902560358667
Weight: kg/lbs	0.40 kg / 0.88 lbs
Board Size / Square Size:	550×550 mm / 60 mm
Materials:	vinyl

EAN	5902560359817
Weight: kg/lbs	0.20 kg / 0.44 lbs
Board Size / Square Size:	510×510 mm / 57 mm
Materials:	mousepad-like

CHESS CLOCKS



D58 PAD RND W/O + CHI127 RED 425 + CHCA07
chess board + pieces + clock



CHCLK10 STAINED

BHB clock



CHCLK11 NATURAL

BHB clock



CHCLK12 STAINED

BHB clock



CHCLK13 NATURAL

BHB clock



EAN	5902560354461
Weight: kg/lbs	0.50 kg / 1.10 lbs
Additional information:	mahogany color / with stand / 95×165×45 mm
Materials:	wooden case

EAN	5902560355000
Weight: kg/lbs	0.33 kg / 0.73 lbs
Additional information:	Light color / with stand / 80×150×40 mm
Materials:	wooden case

EAN	5902560350609
Weight: kg/lbs	0.32 kg / 0.71 lbs
Additional information:	mahogany color / without stand / 80×150×40 mm
Materials:	wooden case

EAN	5902560355024
Weight: kg/lbs	0.50 kg / 1.10 lbs
Additional information:	light color / without stand / 90×165×45 mm
Materials:	wooden case



CHCLK15 BROWN

Classic Clock



EAN	5902560353778
Weight: kg/lbs	0.31 kg / 0.68 lbs
Additional information:	80×150×40 mm / available in various colors
Materials:	plastic case

CHCA02

DGT 1002



EAN	8717662821509
Weight: kg/lbs	0.20 kg / 0.44 lbs
Additional information:	155×60×42 mm
Materials:	plastic

CHCA03

DGT 2010



EAN	8717662821097
Weight: kg/lbs	0.45 kg / 0.99 lbs
Additional information:	195×107×55 mm
Materials:	plastic

CHCA09 BLACK

DGT 1001



EAN	8717662821486
Weight: kg/lbs	0.21 kg / 0.46 lbs
Additional information:	155×60×42 mm / available also in white color
Materials:	plastic



CHCA20

DGT3000



EAN	8717662821431
Weight: kg/lbs	0.50 kg / 1.10 lbs
Size: mm/in	155×115×64 mm
Materials:	plastic

CHCA20

DGT3000 Limited



EAN	8717662821592
Weight: kg/lbs	0.50 kg / 1.10 lbs
Size: mm/in	155×115×64 mm
Materials:	plastic



CHCA07

DGT2500



EAN	8717662821943
Weight: kg/lbs	0.50 kg / 1.10 lbs
Size: mm/in	195×107×55 mm
Materials:	plastic

CHCA45

DGT 1005



EAN	8717662821523
Weight: kg/lbs	0.20 kg / 0.44 lbs
Size: mm/in	155×60×42 mm
Materials:	plastic

CHCA46

DGT 1006



EAN	8717662821585
Weight: kg/lbs	0.20 kg / 0.44 lbs
Size: mm/in	155×60×42 mm
Materials:	plastic

CHCA55

DGT Echo



EAN	8717662821899
Weight: kg/lbs	0.49 kg / 1.08 lbs
Size: mm/in	125×84×51 mm
Materials:	plastic



CHCA25

DGT Pi



EAN	8717662821448
Weight: kg/lbs	0.91 kg / 2.01 lbs
Additional information:	228×127×101 mm
Materials:	plastic

CHCA30

DGT METAL CASE



EAN	8717662821479
Weight: kg/lbs	2.74 kg / 6.04 lbs
Additional information:	440.5×360.5×160.0 mm
Materials:	aluminium

* Carrying case for max 10 clocks

CHCA08 BLUE

DGT1500



EAN	8717662822124
Weight: kg/lbs	0.20 kg / 0.48 lbs
Additional information:	170×96×58 mm
Materials:	plastic

CHCA08 BLACK

DGT1500



EAN	8717662822117
Weight: kg/lbs	0.20 kg / 0.48 lbs
Additional information:	170×96×58 mm
Materials:	plastic

ELECTRONICEQUIPMENT



Zagreb CH1103 S350 chess pieces on D50 WAL BS walnut chessboard



CHCA13

E-board w/o pieces



EAN	8717662821653
Wood type:	walnut / maple
Weight:	6 kg / 13.22lbs
Board Size:	540×540 mm
Square Size: mm/in	55 mm / 2.16 in
Connection type:	USB-C

CHCA14

E-board w/o pieces



EAN	8717662821714
Wood type:	wenge / maple
Weight:	6 kg / 13.22lbs
Board Size:	540×540 mm
Square Size: mm/in	55 mm / 2.16 in
Connection type:	USB-C

CHCA15

E-board w/o pieces



EAN	8717662821646
Wood type:	rosewood / maple
Weight:	6 kg / 13.22lbs
Board Size:	540×540 mm
Square Size: mm/in	55 mm / 2.16 in
Connection type:	USB-C

CHCA16

E-board w/o pieces



EAN	8717662821622
Wood type:	rosewood / maple
Weight:	6 kg / 13.22lbs
Board Size:	540×540 mm
Square Size: mm/in	55 mm / 2.16 in
Connection type:	Bluetooth



CHCA16A

E-board w/o pieces



EAN	8717662821639
Wood type:	walnut / maple
Weight:	6 kg / 13.22lbs
Board Size:	540×540 mm
Square Size: mm/in	55 mm / 2.16 in
Connection type:	Bluetooth

CHCA17

Tournament e-board (w/o pieces)
Rosewood version with side notation also available



EAN	8717662821738
Wood type:	walnut / maple
Weight:	6 kg / 13.22lbs
Board Size:	540×540 mm
Square Size: mm/in	55 mm / 2.16 in
Connection type:	USB-C

CHCA39

Smart board WITH notation (w/o pieces)



EAN	8717662821578
Weight:	2.5 kg / 5.51 lbs
Board Size:	520×520 mm
Square Size: mm/in	55 mm / 2.16 in
Connection type:	USB-C

CHCA43

DGT Smart Board USB Cable & CD for stand
alone Smart Board use only
Single use only



EAN	2000100211946
-----	---------------

CHCA40

Smart board W/O notation (w/o pieces)



EAN	8717662821554
Weight:	2.5 kg / 5.51 lbs
Board Size:	520×520 mm
Square Size: mm/in	55 mm / 2.16 in
Connection type:	USB-C





CHCA41

Connection materials - CABLES for 1st of 12 e-boards



EAN

2000100211922

CHCA42

Connection materials - CABLES for next 11 e-boards



EAN

2000100211939

CHCA47

CENTAUR chess computer



EAN

8717662821837

Weight:

2.5 kg / 5.51 lbs

Board Size:

440×400 mm

Square Size: mm/in

48 mm / 1.88 in

Connection type:

stand alone

CHCA62

PEGASUS e-board



EAN

8717662821912

Weight:

1.80 kg / 3.97 lbs

Board Size:

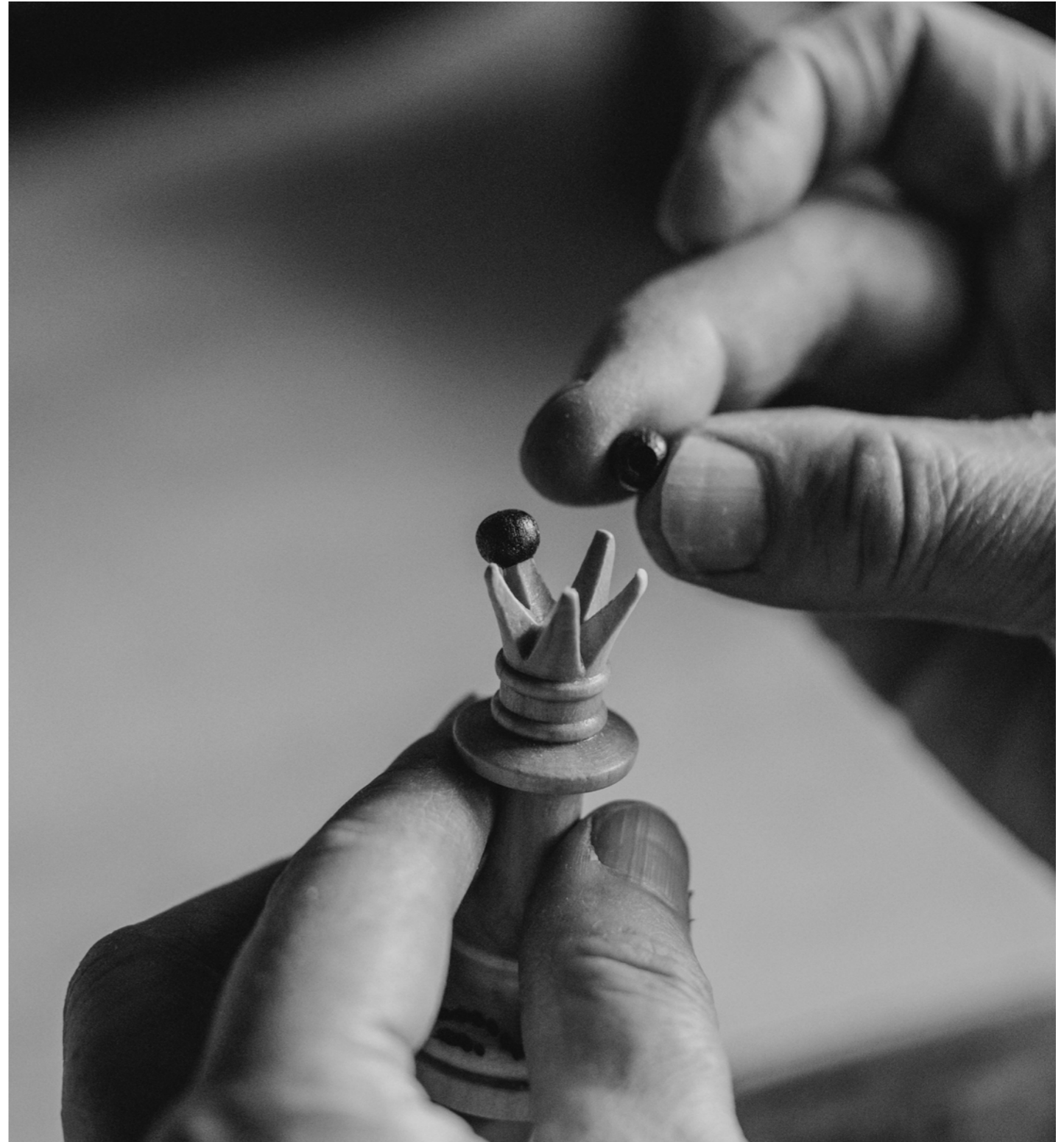
350×350 mm

Square Size: mm/in

40 mm / 1.57 in

Connection type:

Bluetooth





CHCA10 DGT

Carrying bag with pocket for pieces and chess clock storage



EAN	8717662821790
Weight: kg/lbs	0.50 kg / 1.10 lbs
Size: mm/in	600×570×45 mm
Materials:	natural cotton fiber, inside: polyurethane sheeting

CHCA10 STORAGE

Carrying bag for e-board storage (no extra pockets)



EAN	8717662821813
Weight: kg/lbs	0.50 kg / 1.10 lbs
Size: mm/in	600×570×45 mm
Materials:	natural cotton fiber, inside: polyurethane sheeting

CHCA52

Centaur computer storage bag



EAN	5902560354393
Weight: kg/lbs	0.61 kg / 1.34 lbs
Size: mm/in	470×430×20 mm
Materials:	600 denier impertex fabric

CHCA62A

Pegasus storage bag



EAN	5902560350494
Weight: kg/lbs	0.45 kg / 0.99 lbs
Size: mm/in	355×365×20 mm
Materials:	600 denier impertex fabric



CH165A chess + checkers set see page 159 for details



CHCA31

DGT Timeless e-pieces (w/o board)



EAN	8717662821660
Weight: kg/lbs	1.00 kg / 2.20 lbs
King's height: mm/in	95mm / 3.74 in
Materials:	acacia, boxwood
Information about product:	Double Weighted pieces are available

CHCA32

DGT Classic e-pieces (w/o board)



EAN	8717662821981
Weight: kg/lbs	1.05 kg / 2.33 lbs
King's height: mm/in	95mm / 3.74 in
Materials:	boxwood
Information about product:	Double Weighted pieces are available





CHCA34

DGT Royal e-pieces (w/o board)



EAN	8717662821677
Weight: kg/lbs	1.06 kg / 2.34 lbs
King's height: mm/in	95mm / 3.74 in
Materials:	rosewood, boxwood
Information about product:	Double Weighted pieces are available

CHCA33

DGT Ebony e-pieces (w/o board)



EAN	8718662821776
Weight: kg/lbs	1.13 kg / 2.51 lbs
King's height: mm/in	95mm / 3.74 in
Materials:	ebony, boxwood
Information about product:	Double Weighted pieces are available

CHCA36W

DGT Official FIDE weighted e-pieces (w/o board)



EAN	8717662822001
Weight: kg/lbs	2.50 kg / 5.51 lbs
King's height: mm/in	95mm / 3.74 in
Materials:	ebony, boxwood

CHCA38

DGT Plastic e-pieces
Packed in gilbs box



EAN	8717662821561
Weight: kg/lbs	1.30 kg / 2.87 lbs
King's height: mm/in	95mm / 3.74 in
Materials:	plastic



CHCA53

DGT Modern Staunton Weighted



EAN 8717662821868

Weight: kg/lbs 0.92 kg / 2.04 lbs

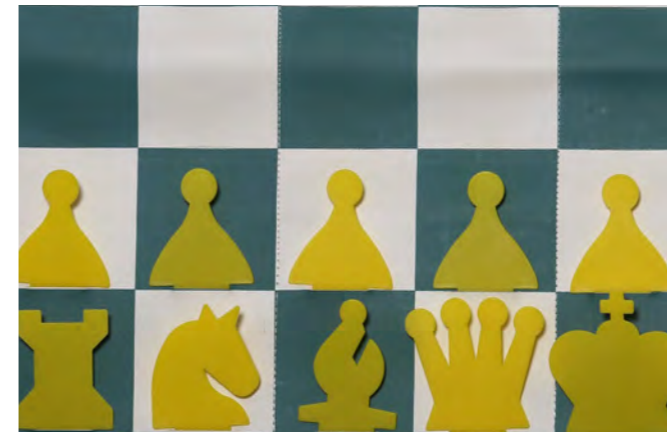
King's height: mm/in 97 mm / 3.81 in

Materials: wood



ACCESORIES / STORAGE / CLUB EQUIPMENT





A1

Chess Cards



EAN	5902560353587
Weight: kg/lbs	0.12 kg / 0.26 lbs
Size:	95×70×25 mm
Materials:	carton, plastic

A2

Dragon Chess Pieces



EAN	5902560353600
Weight: kg/lbs	0.06 kg / 0.13 lbs
Size: mm/in	75 mm / 2.95 in
Materials:	plastic

DD01A

Slotted Roll-up Demo Chess Board



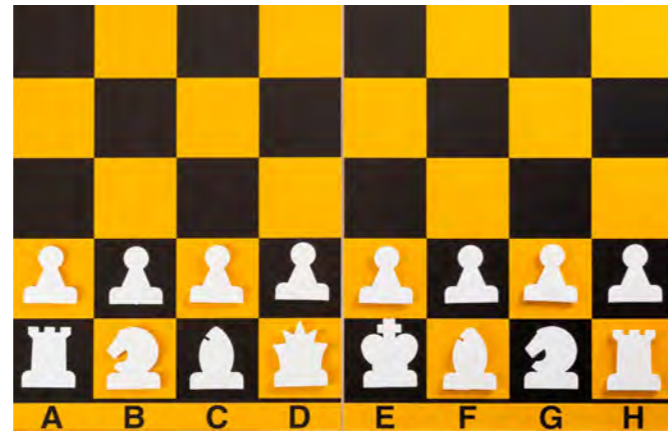
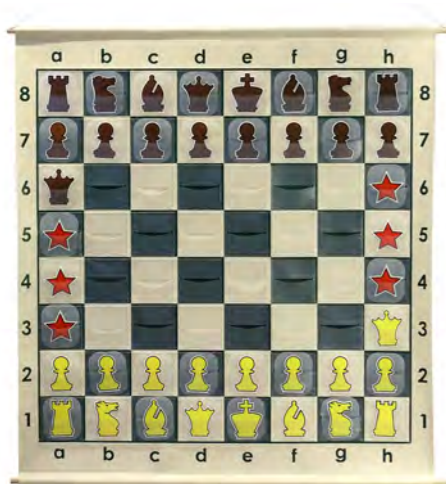
EAN	5902560350500
Weight: kg/lbs	1.00 kg / 2.20 lbs
Size:	680×680 mm / square 70 mm
Materials:	plastic

DD04A

Magnetic Roll-up Demo Chess Board



EAN	5902560350517
Weight: kg/lbs	1.30 kg / 2.87 lbs
Size:	660×730 mm / square 70 mm
Materials:	plastic, magnets



DD06C

Slotted Roll-up Demo Chess Board – Large



EAN	5902560352979
Weight: kg/lbs	1.55 kg / 3.42 lbs
Size:	910×910 mm / square 100 mm
Materials:	plastic

CHTX10 SET

Magnetic Demo Chess Board folded in half with Pieces



EAN	5902560359282
Weight: kg/lbs	4.00 kg / 8.82 lbs
Size:	860×860 mm / square 89 mm
Materials:	wood, metal, plastic, magnets
King's height: mm/in	75 mm / 2.95 in

TR05

School / Club set - chessboard + pieces + bag



EAN	5902560359503
Weight: kg/lbs	1 kg / 2.20 lbs
Board Size:	445×445 mm / square 50 mm
King's height: mm/in	96 mm / 3.77 in

DB06 BURG

Club chess bag – various colors available
Please check QR code for all colour options



EAN	5902560352771
Weight: kg/lbs	0.60 kg / 1.32 lbs
Size:	610×230 mm
Materials:	canvas

TR04

Pocket magnetic



EAN	5902560359497
Weight: kg/lbs	0.1 kg / 0.22 lbs
Size: Folded in three:	255×85×1.5 mm

CS Chess socks



EAN	5902633312374
Size:	available small, medium and large

DB10 BLACK

Club / school carrying bag w/o board



EAN	5902560354409
Weight: kg/lbs	0.1 kg / 0.22 lbs
Size:	530×90 mm



MTM240/241 High Quality key rings

Key Rings - Exclusive metal key rings



EAN: MTM240-01	5404006044030
Weight: kg/lbs	0.1 kg / 0.22 lbs
EAN: MTM241-01	5404006044047
0.1 kg / 0.22 lbs	0.1 kg / 0.22 lbs



CHTX9A

Cotton storage bag (w/o pieces)



EAN	5902560353488
Weight: kg/lbs	0.1 kg / 0.22 lbs
Size: mm/in	200×180 mm



CHTX9 VELVET

Quality velvet storage bag



EAN 5902560354447

Weight: kg/lbs 0.15 kg / 0.33 lbs

Size: 200x240 mm



CHTX9 VELVET+TR03G+DMV03 BLUE



WOODEN CHESS TROPHIES



Size code:	King	Queen	Rook	Pawn
Height:	370 mm	340 mm	265 mm	235 mm
Weight:	1040 g	990 g	880 g	580 g
Base dimensions:	120×120 mm	120×120 mm	120×120 mm	100×100 mm



WOODEN KEY RINGS



	King	Queen	Bishop	Knight	Rook	Pawn
Height:	75 mm	55 mm	40 mm	50 mm	45 mm	35 mm
Weight:	10 g	10 g	9g	7 g	7 g	6 g
Base diameter:	9 mm	9 mm	10 mm	9 mm	9 mm	8 mm

1 CHW21B LIGHT
Light Wooden Box No 4



EAN	5902560353433
Weight: kg/lbs	0.40 kg / 0.88 lbs
Size: mm/in	160×120×70 mm
Materials:	beech, birch

2 CHW23B LIGHT
Light Wooden Box No 5



EAN	5902560353730
Weight: kg/lbs	0.40 kg / 0.88 lbs
Size: mm/in	200×130×80 mm
Materials:	beech, birch

3 CHW24B LIGHT
Light Wooden Box No 6



EAN	5902560353440
Weight: kg/lbs	0.36 kg / 0.79 lbs
Size: mm/in	210×145×80 mm
Materials:	beech, birch

CHW28B LIGHT
Light Wooden Box No 7



EAN	5902560357929
Weight: kg/lbs	0.45 kg / 1.0 lbs
Size: mm/in	220×150×78 mm
Materials:	beech, birch



1 CHW21B DARK
Dark Wooden Box No 4



EAN	5902560352016
Weight: kg/lbs	0.40 kg / 0.88 lbs
Size: mm/in	160×120×70 mm
Materials:	beech, birch

2 CHW23B DARK
Dark Wooden Box No 5



EAN	5902560352023
Weight: kg/lbs	0.40 kg / 0.88 lbs
Size: mm/in	200×130×80 mm
Materials:	beech, birch

3 CHW24B DARK
Dark Wooden Box No 6



EAN	5902560352030
Weight: kg/lbs	0.36 kg / 0.79 lbs
Size: mm/in	210×145×80 mm
Materials:	beech, birch

4 CHW28B DARK
Dark Wooden Box No 7



EAN	5902560357912
Weight: kg/lbs	0.45 kg / 1.0 lbs
Size: mm/in	220×150×78 mm
Materials:	beech, birch

5 CHW30B DARK
Dark Wooden Box No 8



EAN	5902560357950
Weight: kg/lbs	0.60 kg / 1.32 lbs
Size: mm/in	240×150×110 mm
Materials:	beech, birch

1

2

3

4

5





CHW30B SAPELE

Deluxe Wooden Box



EAN	5902560351804
Weight: kg/lbs	0.80kg / 1.76 lbs
Size: mm/in	240×150×110 mm
Materials:	sapele wood

CHW30B WALNUT

Deluxe Wooden Box



EAN	5902560351811
Weight: kg/lbs	0.80 kg / 1.76 lbs
Size: mm/in	240×150×110 mm
Materials:	walnut

CHW29B SAPELE

Deluxe Wooden Box



EAN	5902560351781
Weight: kg/lbs	0.70 kg / 1.54 lbs
Size: mm/in	240×150×85 mm
Materials:	sapele wood

CHW29B WALNUT

Deluxe Wooden Box



EAN	5902560351798
Weight: kg/lbs	0.70 kg / 1.54 lbs
Size: mm/in	240×150×85 mm
Materials:	walnut



CHW22B

Staunton Lux no.5 Box Black



EAN	5902560353563
Weight: kg/lbs	1.00 kg / 2.20 lbs
King's height: mm/in	90 mm / 3.54 in
Materials:	beech, birch

CHW22B

Staunton Lux no.5 Box Brown



EAN	5902560353426
Weight: kg/lbs	1.00 kg / 2.20 lbs
King's height: mm/in	90 mm / 3.54 in
Materials:	beech, birch



CHI103 S375 Zagreb chess pieces with CHW29B WAL box

GARDEN CHESS SETS



GCP16 GARDEN SET see page 307 for details



GC12

12" King Mini Giant Garden Chess Pieces



EAN	5902560353259
Weight: kg/lbs	5.50 kg / 12.12 lbs
Size: mm/in	300 mm / 11.81 in
Materials:	plastic
King's height: mm/in	300 mm / 11.81 in



GN6

Giant Nylon Chess Board 6"



EAN	5902560353372
Weight: kg/lbs	0.45 kg / 1.00 lbs
Size: mm/in	150×150 cm / square: 170 mm
Materials:	nylon
King's height: mm/in	300 mm / 11.81 in

GCN12

12" King Garden Chess Set with nylon board



EAN	5902560355970
Weight: kg/lbs	6.00 kg / 13.22 lbs
Size: mm/in	150×150 cm / 170 mm
Materials:	plastic / nylon
King's height: mm/in	300 mm / 11.81 in





GC16

16" King Garden Chess Pieces



EAN	5902560353266
Weight: kg/lbs	12 kg / 26.43 lbs
Size: mm/in	410 mm / 16.14 in
Materials:	plastic
King's height: mm/in	410 mm / 16.14 in

GN8

Giant Nylon Chess Board 8"



EAN	5902560353389
Weight: kg/lbs	0.55 kg / 1.21lbs
Size: mm/in	170x170 cm / square: 210 mm
Materials:	nylon
King's height: mm/in	410 mm / 16.14 in

GCN16

16" King Garden Chess Set with nylon board



EAN	5902560355963
Weight: kg/lbs	11.00 kg / 24.24 lbs
Size: mm/in	170x170 cm / square: 210 mm
Materials:	plastic / nylon
King's height: mm/in	410 mm / 16.14 in





GC25

25" King Garden Chess Pieces



EAN	5902560353273
Weight: kg/lbs	31.00 kg / 68.32 lbs
Size: mm/in	640 mm / 25.20 in
Materials:	plastic
King's height: mm/in	640 mm / 25.20 in



GN13

Giant Fabric Chess Board 13"



EAN	5902560353358
Weight: kg/lbs	1.2 kg / 2.64 lbs
Size: mm/in	270×270 cm / square: 330 mm
Materials:	nylon
King's height: mm/in	640 mm / 25.20 in

GCN25

25" King Garden Chess Set with nylon board



EAN	5902560355925
Weight: kg/lbs	45.00 kg / 99.18 lbs
Size: mm/in	270×270 cm / square: 330 mm
Materials:	plastic / nylon
King's height: mm/in	640 mm / 25.20 in





GC36 GARDEN XXL

25" King Garden chess pieces + extension set



EAN	5902560353297
Weight: kg/lbs	30.00 kg / 66.12 lbs
Size: mm/in	270 mm / 10.63 in
Materials:	plastic

GN24

Giant Fabric Chess Board 24"



EAN	5902560353365
Weight: kg/lbs	3.70 kg / 8.15 lbs
Size: mm/in	520×520 cm / square: 600 mm
Materials:	nylon
King's height: mm/in	suitable for human chess



GCN36

36" King Garden Chess Set with nylon board



EAN	5902560355932
Weight: kg/lbs	45 kg / 110.13 lbs
Size: mm/in	270×270 cm / square: 330 mm
Materials:	plastic / nylon
King's height: mm/in	90 mm / 36 in



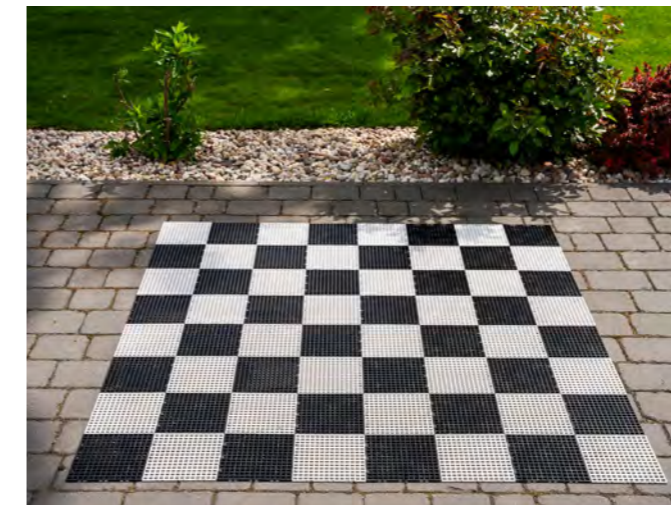


GC12

12" King Mini Giant Garden Chess Pieces



EAN	5902560353259
Weight: kg/lbs	5.50 kg / 12.12 lbs
Size: mm/in	300 mm / 11.81 in
Materials:	plastic
King's height: mm/in	300 mm / 11.81 in



GM6

Mini Giant Plastic Chess Board 6"



EAN	5902560353341
Weight: kg/lbs	4 kg / 8.91 lbs
Size: mm/in	150×150 cm / square: 175 mm
Materials:	quality PE with UV film
King's height: mm/in	300 mm / 11.81 in

GCP12

12" King Mini Giant Chess Set with plastic board



EAN	5902560355987
Weight: kg/lbs	9 kg / 19.82 lbs
Size: mm/in	150×150cm / square: 175 mm
Materials:	plastic
King's height: mm/in	300 mm / 12 in





GC25

25" King Garden Chess Pieces



EAN	5902560353273
Weight: kg/lbs	31.00 kg / 68.32 lbs
Size: mm/in	640 mm / 25.20 in
Materials:	plastic
King's height: mm/in	640 mm / 25.20 in

GM14

Giant Plastic Chess Board 14"



EAN	5902560356076
Weight: kg/lbs	27 kg / 59.47 lbs
Size: mm/in	290×290 cm / square: 350 mm
Materials:	plastic



GCP25

25" King Giant Garden Chess Set with plastic board



EAN	5902560355949
Weight: kg/lbs	45.00 kg / 99.18 lbs
Size: mm/in	290×290 cm / square: 350 mm
Materials:	plastic
King's height: mm/in	640 mm / 25.20 in





GC16

16" King Garden Chess Pieces



EAN	5902560353266
Weight: kg/lbs	12 kg / 26.43 lbs
Size: mm/in	410 mm / 16.14 in
Materials:	plastic
King's height: mm/in	410 mm / 16.14 in



GM8

Mini Giant Plastic Chess Board 8"



EAN	5902560357257
Weight: kg/lbs	11 kg / 24.25 lbs
Size: mm/in	160x160 cm / square: 210 mm
Materials:	rubber
King's height: mm/in	400 mm / 15.74 in

GCP16

16" King Giant Garden Chess Set with rubber board



EAN	2000010033133
Weight: kg/lbs	22 kg / 48.49 lbs
Size: mm/in	160x160 cm / square: 210 mm
Materials:	plastic
King's height: mm/in	410 mm / 16.14 in





GCP36

36" King Giant Garden Chess Set with plastic board



EAN	5902560355956
Weight: kg/lbs	68 kg / 149.79 lbs
Size: mm/in	270×270 cm / square: 330 mm
Materials:	plastic
King's height: mm/in	910 mm / 36 in

GM13

Plastic Rubberized Vinyl Giant Chess Board 12"



EAN	5902560357240
Weight: kg/lbs	25.00 kg / 55.07 lbs
Size: mm/in	240×240cm / square: 330 mm
Materials:	plastic





GCD83

Garden Chess and Checker Set



EAN	5902560354492
Weight: kg/lbs	5.00 kg / 11.02 lbs
Size: mm/in	90×90 cm / square: 90 mm
Materials:	plastic
King's height: mm/in	200 mm / 7.87 in

GC8

8" King Garden Chess



EAN	5902560353280
Weight: kg/lbs	3.50 kg / 7.71 lbs
Size: mm/in	90×90 cm / square: 90 mm
Materials:	plastic
King's height: mm/in	200 mm / 7.87 in



TR20

Garden Chess Set Large



EAN	5902560359459
Weight: kg/lbs	35 kg / 77.14 lbs
Size: mm/in	900 mm / 35.43 in
Materials:	quality plastic
King's height: mm/in	900 mm / 35.43 in

TR21

Garden Chess Set Medium



EAN	5902560359466
Weight: kg/lbs	20 kg / 44.08 lbs
Size: mm/in	740 mm / 29.13 in
Materials:	quality plastic
King's height: mm/in	740 mm / 29.13 in

TR22

Garden Chess Set Small



EAN	5902560359473
Weight: kg/lbs	14 kg / 30.86 lbs
Size: mm/in	450 mm / 17.72 in
Materials:	quality plastic
King's height: mm/in	450 mm / 17.72 in



RAW chess set

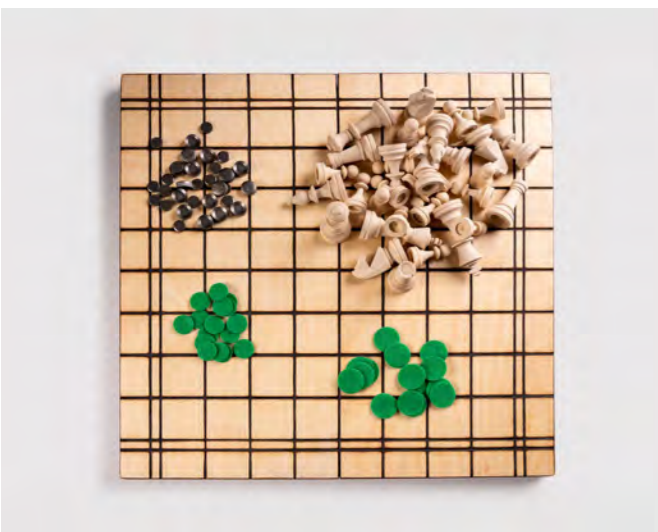
ready to paint

We are the only company in the world that offers RAW, fully customisable chess set. The offer includes chess pieces, a chessboard and a case for storing the chess pieces safely and securely. You can also buy all three products in a set.

The chess pieces are made of hornbeam wood. Additionally, we add metal weights and felt pads to the pieces for self-assembly and gluing. The chess-board has burnt lines to delineate the squares and border, and is ready to be painted.

This set offers great entertainment for the whole family and constitutes a universal gifts. It was designed for school and preschool children and for those that are artistic or creative.

We also created it thinking of parents and grandparents who want to spend their free time creatively and wisely with their family.



CHW26 RAW WOOD

DIY raw wood chess pieces



EAN	5902560353747
Weight: kg/lbs	0.55 kg / 1,21 lbs
King's height: mm/in	90 mm / 3.54 in
Materials:	raw wood

DIY RAW WOOD BOX

Raw wood chess box



EAN	5902560352986
Weight: kg/lbs	1.35 kg / 2.98 lbs
Size: mm/in	480×240×56 mm
Materials:	beech, birch

Our RAW wooden sets are universal & wise gift for everyone

First, an idea

What you need is your creativity, joy and a colourful painting set. DIY chess set makes everyone a great artist!



Find inspiration

Find inspiration with your loved ones, friends or just on your own. Have a fantastic time together painting the chessboard and chess pieces with as many colors as you wish!



Creativity

Getting bored on a rainy day? The DIY set makes the time at home or school a wonderful experience of creativity and fun. Also, it may be a good introduction to 'playing chess learning.



Enjoy!

Finally, enjoy the play with your unique self-painted chess set or let's make it an original gift. With the DIY set everyone becomes the winner!



So, let's start!

Personalisation

Not only can you purchase professional chess equipment at our store but also you can ask for personalized items. It can be a good idea for gifts or for promoting your brand. We offer three different methods of customization!

Laser Engraving

We are able to offer customized engraving for all our chess boards and wooden chess set boxes. The most common customization our customers request is the laser engraving of a graphic or logo on the A1 (bottom-left) or H1 squares (bottom-right) on chess boards. A dedication or quote can also be placed on the border of a chess board, on the inside of a folding chess set or travel set, or on the lid of a wooden storage box for chess pieces.



Silkscreen Printing

We are to happy to prepare customized printing on various items such as wooden or plastic chessboards, wooden boxes for pieces storage, material bags for pieces storage etc.

Sunrise is also very flexible regarding any unusual requests: customized boxes, bespoke sizing/colouring of chess products, retail packaging with your logo or shrink-wrapping of products.

We have extensive knowledge of bringing new chess products to marketplaces like Amazon and others, so we can help you with the whole process from start to finish. We can also slightly adjust our products: change dimensions, colors, modify design in order to meet all your requirements.



Co-operation

Sunrise Chess & Games

Was founded in 1996 in Lublin, Poland as a family business. Over the years we have become one of the biggest chess companies in the world. Our products can be found in almost every country in Europe and South America as well as in Japan, US and Australia. What defines our products is uniqueness and high quality. In a world of mass production, we remain faithful to traditional craftsmanship. The various styled and themed chess sets are a physical incarnation of passion, energy and character of our craftsmen. We promote the sales of these handcrafted games above mass produced products. Carving, burning and inlaying make these games individual and unique even within the same batch.

Sunrise Chess & Games places ethics before anything else. We believe that true quality of product is not just final appearance of a product, but it is the entire process from beginning to end. That is why we source our raw materials from sustainably managed forests and believe in treating the environment, our employees and our customers fairly.



Cooperation

We are the exclusive distributor of DGT in Poland, which is the world leader in the manufacture of electronic clocks and electronic chessboards. All DGT products are in stock and ready for immediate dispatch. We offer only genuine products, carrying the DGT hologram, guaranteeing trouble-free replacement or repair in the unlikely case of failure. We are also a direct importer of exclusive handcrafted Indian chess pieces, whose quality and beauty are unmatched by chess sets from any other country.

We are also trusted by the biggest chess publishers in the world, and are the exclusive distributors of books for Quality Chess, New in Chess and Everyman, which constitutes over 80% of all chess books printed.



Why cooperate with us – how to collaborate with Sunrise Chess & Games

Our Advantages

Reseller benefits:

- One of the largest selections of chess equipment and books. Over 3,000 unique chess items and 1,500 chess book titles
- Physical stock in our warehouse = immediate, fast, direct delivery from our logistics centre, no virtual products!
- Manufacturer pricing on high-quality items = a high profit margin with minimal returns or customer issues
- Easy ordering and friendly, multi-lingual, customer-service = an efficient and pleasant ordering experience
- 27 years of experience in B2B chess trading = comprehensive knowledge of shipping and customs procedures, we do all the work for you!
- Knowledge of domestic markets – we can advise on the proven best-sellers in your country
- Dropshipping services – an effective solution requiring no up-front investment
- Personalization & customization - your company or customer's logo - available on a wide range of products & packaging to enhance your brand and sales



What are the key advantages of dropshipping?

- Very low startup costs,
- No inventory management,
- Wide product selection,
- Location independence,
- Lower overhead costs,
- No risk,
- Extra income.



Key advantages of dropshipping include

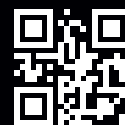
1. **Low startup costs:** One of the most significant advantages of dropshipping is that it requires minimal upfront investment. You don't need to purchase and store inventory, which eliminates the need for substantial initial capital. You can start an online store with relatively low overhead costs.
2. **No inventory management:** as a dropshipper, you don't have to worry about inventory management, including storage, tracking, or managing unsold products. This frees up time and resources that can be used for other aspects of your business.
3. **Wide product selection:** dropshipping allows you to offer a broad range of products from different suppliers. You can quickly expand your product catalog without the constraints of physical storage space.
4. **Flexibility:** you have the flexibility to experiment with different product offerings, pricing strategies, and marketing techniques without being locked into a specific inventory. This adaptability can be crucial in a dynamic e-commerce environment.
5. **Location independence:** since you don't handle physical products, you can run a dropshipping business from anywhere with an internet connection. This flexibility can be particularly appealing to digital nomads or those looking for remote work opportunities.
6. **Lower overhead costs:** the absence of inventory and associated warehousing costs mean lower operating expenses, making it easier to maintain and scale your business.
7. **Scalability:** dropshipping business can quickly and efficiently scale since you don't need to worry about inventory constraints. As your business grows, you can easily add more products and expand into new markets.
8. **Reduced risk:** you only purchase products after you've made a sale, so there is less financial risk involved. You won't be stuck with unsold inventory if a product doesn't sell well.
9. **Focus on marketing and customer service:** with inventory and shipping logistics handled by suppliers, you can focus on core business activities, such as marketing, customer acquisition, and providing excellent customer service.
10. **Testing and market exploration:** you can easily test new product ideas or enter new markets without committing significant resources. If a product or niche doesn't perform well, you can pivot without major losses.
11. **Supplier expertise:** you can leverage the expertise and experience of your suppliers in product sourcing, quality control, and shipping logistics.







SUNRISE CHESS & GAMES
Szarugi 61, 21-002 Marysin, POLAND



team@crafts.pl
+48 692 480 514
TheChessSets.com